

SPECIFICATIONS & OPERATING INSTRUCTIONS

MAX. SHUT HEIGHT:	6-3/4" (171.4mm)
MIN. SHUT HEIGHT:	6-5/8" (168.3mm)
MAX. TUBE SIZE:	2-3/8" O.D. (60.3mm) round or square
MIN. TUBE SIZE:	1-5/16" O.D. (33.3mm) round or square

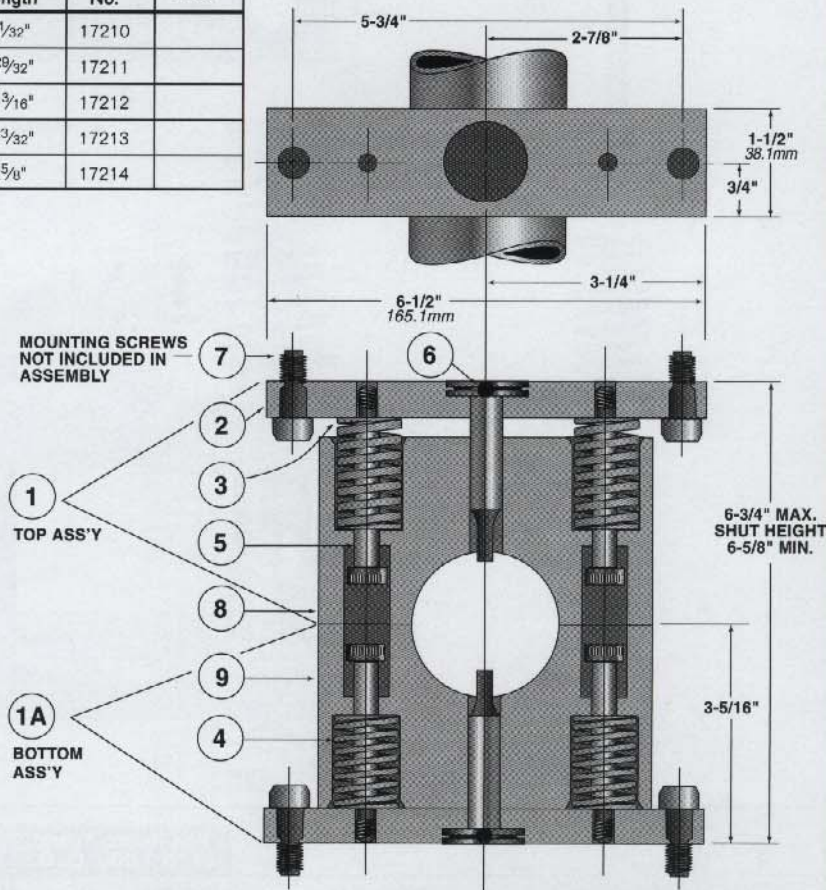
MAX. WALL THICKNESS (MILD STEEL):	.125" (3.18mm)
MIN. WALL THICKNESS:	.031" (.79mm)
Note: For stainless steel tube punching applications contact UniPunch Quotations Department	
MAX. HOLE DIAMETER:	.500" (12.7mm)
Note: For shaped holes, (obround, square) contact UniPunch Quotations Department	

TP-2³/₈"

Dia./Square Max.

PUNCH SELECTION CHART

Tube O.D.	Punch Length	Cat. No.	Price
1 ⁵ / ₁₆ " to 1 ⁷ / ₁₆ "	3 ¹ / ₃₂ "	17210	
1 ¹ / ₂ " to 1 ⁵ / ₈ "	2 ²⁹ / ₃₂ "	17211	
1 ¹¹ / ₁₆ " to 2"	2 ¹³ / ₁₆ "	17212	
2 ¹ / ₁₆ " to 2 ³ / ₁₆ "	2 ²³ / ₃₂ "	17213	
2 ¹ / ₄ " to 2 ³ / ₈ "	2 ⁵ / ₈ "	17214	



TO ORDER, SPECIFY:

- Size of Tube
- Hole Diameter
- Wall Thickness
- Type of Material

Note: Due to lack of die, unsupported tubes distort when punched. Distortion varies considerably depending upon punch size, tube O.D., wall thickness, & material type. Punch life or number of holes punched between sharpening cannot be determined.

Item	Description	FOR ROUND TUBES UP TO 2.375" O. D.		FOR SQUARE TUBES UP TO 2.375" SQ.	
		Cat. No.	Price	Cat. No.	Price
	Complete Unit (Includes Top & Bottom Punches)	17202		17302	
1	Top Ass'y (Includes Punch)	17223		17323	
1A	Bottom Ass'y (Includes Punch)	17224		17324	
2	Punch Plate	17272		17272	
3	Top Stripping Spring (Red) (2 Req'd)	17140		17140	
4	Bottom Stripping Spring (Blue) (2 Req'd)	17160		17160	
5	Stripper Bolt (2 Per Ass'y)	17139		17139	
6	Roll Pin (1/8" Dia. x 3/16")	91679		91679	
7	Mounting Screw (3/8"-16 x 1" S.H.C.S.)	91027		91027	
8	Top Stripping Guide Only (Specify Tube O.D.)	17262		17362	
9	Bottom Stripping Guide Only (Specify Tube O. D.)	17263		17363	

Exacta Precision Ltd. Toll Free Tel: 1.800.268.5573 Email Info@exactapunch.com

UNIPUNCH