

TP-1 1/4"

Dia./Square Max.

SPECIFICATIONS & OPERATING INSTRUCTIONS

MAX. SHUT HEIGHT:	6-1/4" (158.7mm)
MIN. SHUT HEIGHT:	6-1/8" (155.6mm)
MAX. TUBE SIZE:	1-1/4" O.D. (31.7mm) round or square
MIN. TUBE SIZE:	9/16" O.D. (14.3mm) round or square

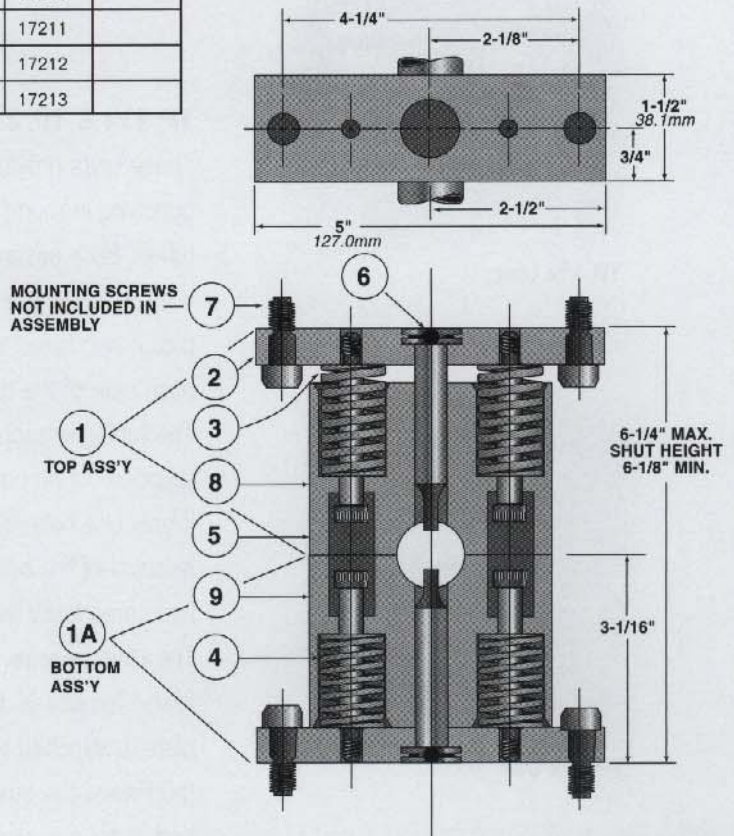
MAX. WALL THICKNESS (MILD STEEL):	.125" (3.18mm)
MIN. WALL THICKNESS:	.031" (.79mm)
Note: For stainless steel tube punching applications contact UniPunch Quotations Department	
MAX. HOLE DIAMETER:	.500" (12.7mm)
Note: For shaped holes, (obround, square) contact UniPunch Quotations Department	

TO ORDER, SPECIFY:

- Size of Tube
- Hole Diameter
- Wall Thickness
- Type of Material

Note: Due to lack of die, unsupported tubes distort when punched. Distortion varies considerably depending upon punch size, tube O.D., wall thickness, & material type. Punch life or number of holes punched between sharpening cannot be determined.

PUNCH SELECTION CHART			
Tube O.D.	Punch Length	Cat. No.	Price
9/16" to 1 1/16"	3 1/32"	17210	—
3/4" to 7/8"	2 29/32"	17211	
15/16" to 1 1/16"	2 13/16"	17212	
1 1/8" to 1 1/4"	2 23/32"	17213	



Item	Description	FOR ROUND TUBES UP TO 1.250" O. D.		FOR SQUARE TUBES UP TO 1.250" SQ.	
		Cat. No.	Price	Cat. No.	Price
	Complete Unit (Includes Top & Bottom Punches)	17200		17300	
1	Top Ass'y (Includes Punch)	17205		17305	
1A	Bottom Ass'y (Includes Punch)	17206		17306	
2	Punch Plate	17271		17271	
3	Top Stripping Spring (Red) (2 Req'd)	17140		17140	
4	Bottom Stripping Spring (Blue) (2 Req'd)	17160		17160	
5	Stripper Bolt (2 Per Ass'y)	17138		17138	
6	Roll Pin (1/8" Dia. x 3/16")	91679		91679	
7	Mounting Screw (3/8"-16 x 1" S.H.C.S.)	91027		91027	
8	Top Stripping Guide Only (Specify Tube O.D.)	17250		17350	
9	Bottom Stripping Guide Only (Specify Tube O. D.)	17253		17353	

Exacta Precision Ltd. Toll Free Tel: 1.800.268.5573 Email Info@exactapunch.com