

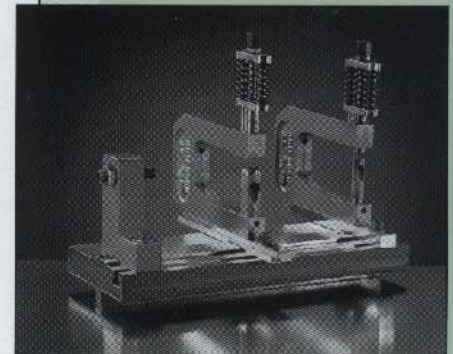
G S E R I E S

For Extrusions, Sheets
and Roll Formed Parts

General Information for Press Brake Setups

Series 'G' Hole Punching Units are designed for close center-to-center hole punching in extrusions, roll formed parts and sheets used by Aluminum Extrusion Fabricators, Storm Window Manufacturers and the Aircraft Industry.

Triple Spring Units with 7 1/2" (190.5mm) Shut Height are easily mounted to standard press brake beds using the UniPunch 5110 Bed Rail as shown in the illustration.



Added features include;

- Easily interchangeable Punches and Pedestal Dies
- Round holes from 3/32" (2.4mm) to 5/16" (7.9mm) diameter
- Pedestal Dies can be modified to accommodate a variety of formed parts (see example)
- The Triple Spring Stripping Guide provides extra stripping power for material up to 1/8" (3.2mm) thick
- Adjustable Punch Head on Triple Spring Unit extends tool life, allowing 1/4" (6.4mm) grind life on Punch

Single Spring Unit
see pg. 104

ADDITIONAL PRODUCT

PRESS BRAKE MOUNTING ACCESSORIES FOR ALL G SERIES UNITS

RAM PLATE (5" WIDE X 3/4" THICK)				BED RAIL G SERIES			
Cat. No.	Length	Shipping Weight	Price	Cat. No.	Length	Shipping Weight	Price
5020-48	48"	56 lbs.		5110-48	48"	92 lbs.	
5020-72	72"	84 lbs.		5110-72	72"	138 lbs.	
5020-96	96"	112 lbs.		5110-96	96"	184 lbs.	
5020-120	120"	140 lbs.		5110-120	120"	230 lbs.	
5020-144	144"	168 lbs.		5110-144	144"	276 lbs.	

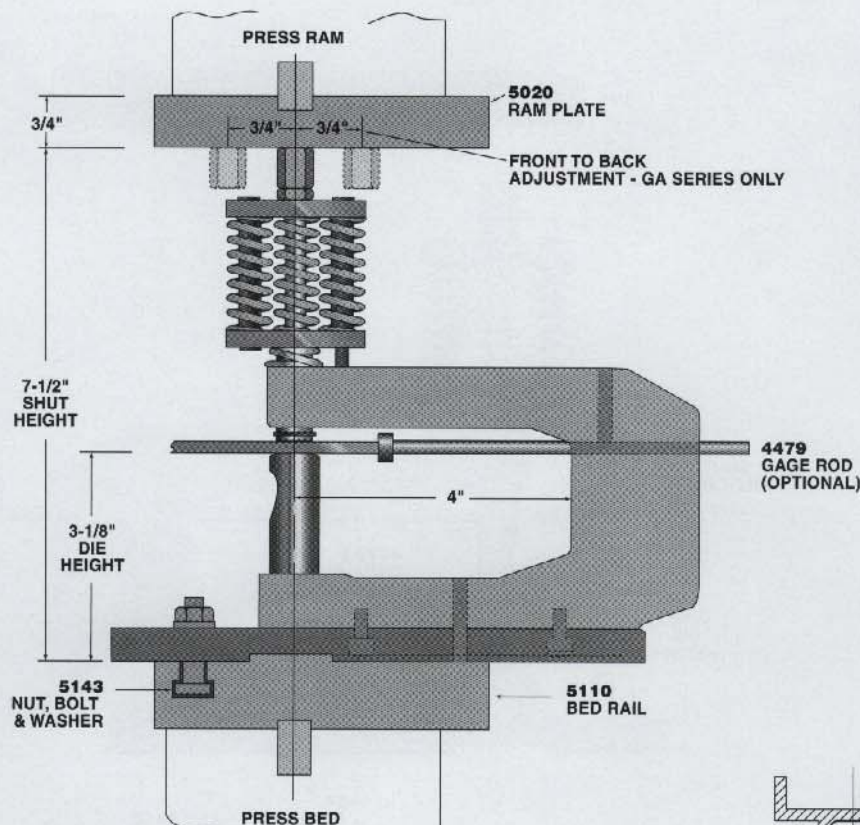
NUT, BOLT AND WASHER SET

Cat. No.	Price
5143	

END GAGE ASSEMBLY

Cat. No.	Price
5085	

Triple Spring Unit mounting method shown



The 3/4" (19.0mm) wide holders are available with a fixed base for straight line holes or adjustable base for staggered hole patterns with 1/2" front to back adjustment.

TYPICAL SPECIAL DIE

Made to
suit Customer Requirements

