

5300 SERIES

Flat Stock Cutoff Units

UniPunch Cutoff Units are a self-contained two post die set with Pressure Pads front and rear. There are (2) .375 dia. Pilot Pins in line with the cutting edge and (2) hold down locations for quick and accurate positioning of the unit. This self-contained Cutoff Unit has a compatible shut height with UniPunch Series "B" Unitized Tooling. This unit can be mounted in a Press or Press Brake adjacent to existing Unitized Tooling or stand alone cut to length applications up to 8" wide x 10 GA./1.34" (3.4 mm) thick steel max.

SPECIFICATIONS & OPERATING INSTRUCTIONS

OPERATING SHUT HEIGHT:	5-1/2" (139.7mm)
MIN. SHUT HEIGHT:	5-5/16" (134.9mm)
UNIT OPEN HEIGHT:	5-7/8" (149.2mm)
DIE HEIGHT:	2-19/32" (65.9mm)
MIN. MATERIAL THICKNESS:	22 GA. (.76mm)

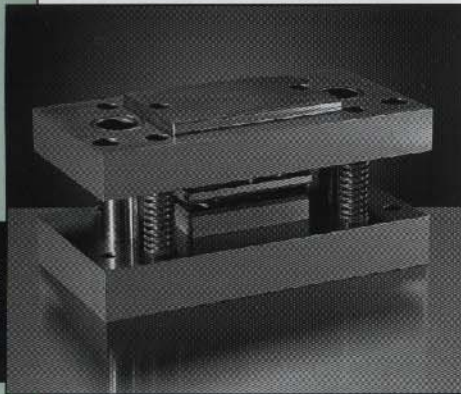
MIN. DIE CLEARANCE:	Die Clearance is preset at factory
MAX. MATERIAL THICKNESS (MILD STEEL):	10 GA./1.34" (3.4mm)
MAX. MATERIAL THICKNESS (STAINLESS STEEL):	1/16" (1.6mm)

COMPLETE UNITS	
Catalog No.	Price
5300-200	
5300-400	
5300-600	
5300-800	

COMMON DIMENSIONS				
Max. Cutoff Width A	B	C	Max. Tonnage	Shipping Weight
2"	10 1/2"	9 1/4"	8	55.5 lbs.
4"	12 1/2"	11 1/4"	15	66 lbs.
6"	14 1/2"	13 1/4"	23	77 lbs.
8"	16 1/2"	15 1/4"	30	87.25 lbs.

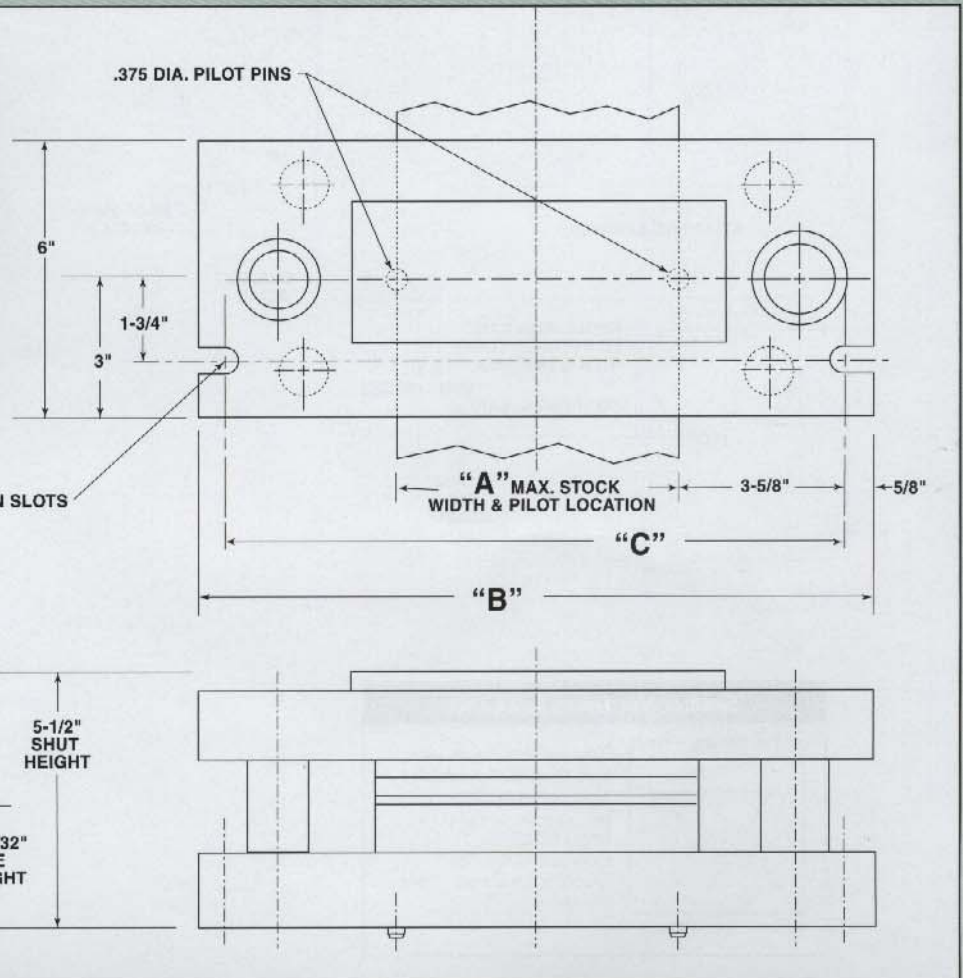
Note: For sizes not shown, contact UniPunch Quotation Department for application information and pricing.

Note: Punch & Die steels on Flat Stock Cutoff Units are not interchangeable. Units must be returned to factory for replacement. Spare Punch & Die steels can be supplied with new Units.



B SERIES

9/16" WIDE HOLD DOWN SLOTS



UNIPUNCH

Exacta Precision Ltd. Toll Free Tel: 1.800.268.5573 Email Info@exactapunch.com