

SPECIFICATIONS & OPERATING INSTRUCTIONS

OPERATING SHUT HEIGHT: 5-1/2" (139.7mm)
 MIN. SHUT HEIGHT: 5-5/16" (134.9mm)
 UNIT OPEN HEIGHT: 5-15/16" (150.8mm)
 DIE HEIGHT: 2-19/32" (65.9mm)
 MAX. MATERIAL THICKNESS
 (MILD STEEL): 10 GA./.134" (3.4 mm)

MIN. MATERIAL THICKNESS: 22 GA./.030" (.76mm)
 DIE CLEARANCE: preset at factory
 MAX. MATERIAL THICKNESS
 (STAINLESS STEEL): 1/16" (1.6mm)

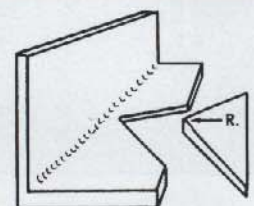
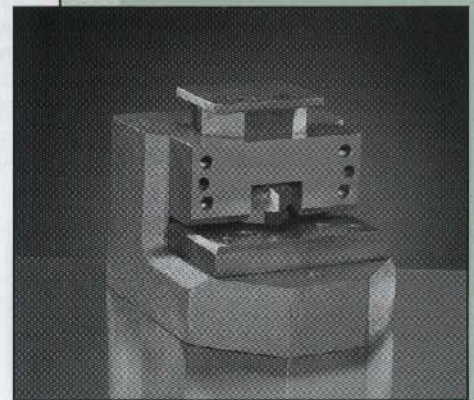
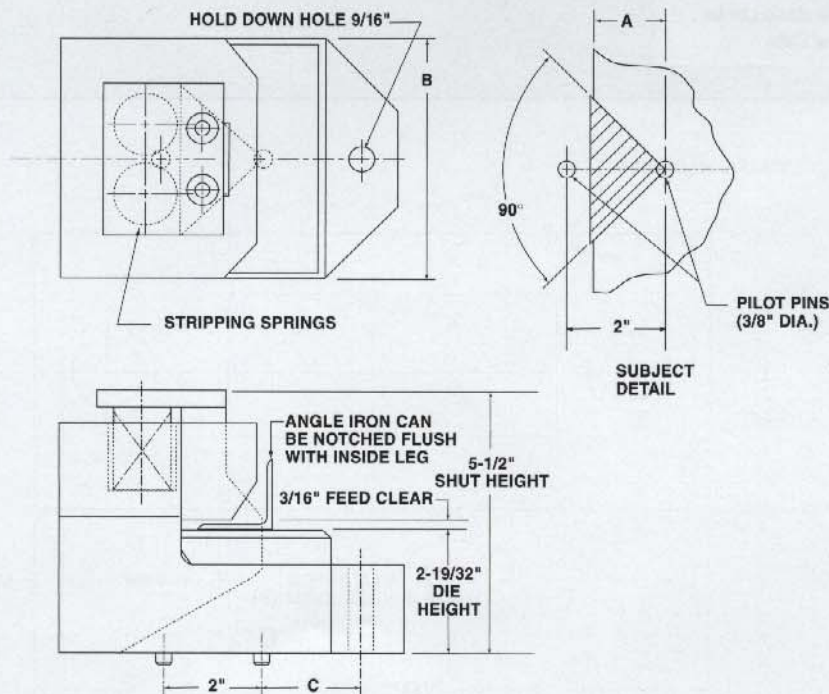
B SERIES
Vee
 NOTCH

SERIES B - VEE NOTCH UNITS

Cat. No.	Price	Depth A	Holder Width B	C	Shipping Weights
9010		1"	4 ³ / ₄ "	1 ¹¹ / ₁₆ "	27lbs.
9020		1 ¹ / ₂ "	6 ¹ / ₄ "	2 ¹ / ₈ "	35 lbs.

Note: Punch & Die steels on Vee Notch Units are not interchangeable. Units must be returned to factory for replacement. Spare Punch & Die steels can be supplied with new Units.

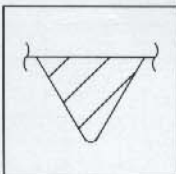
9010 & 9020



B SERIES

Note: When notching angle iron, a 1/8" radius on notching blade is recommended. Consult Exacta's Quotations Department.

SPECIAL VEE UNITS AVAILABLE



Special Vee Units with less than 90° available, also notch angles over 90° can be supplied in Edge Notch Units. Contact Exacta Quotations Department for pricing.