

# B SERIES Edge NOTCH

## SPECIFICATIONS & OPERATING INSTRUCTIONS

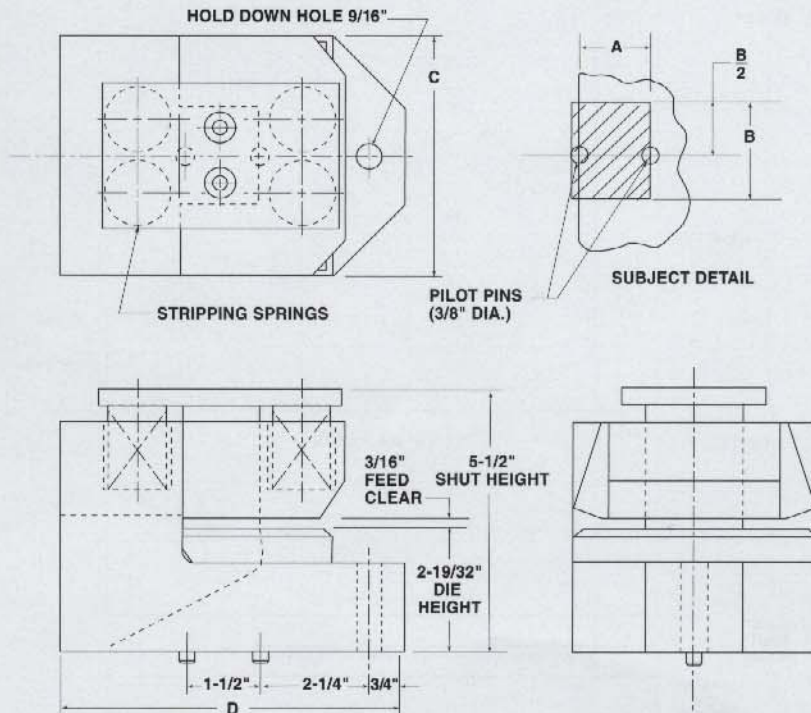
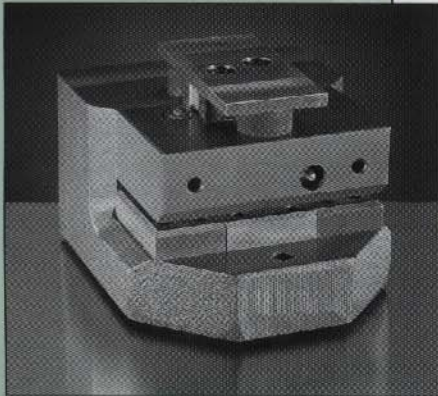
OPERATING SHUT HEIGHT:	5-1/2" (139.7mm)
MIN. SHUT HEIGHT:	5-5/16" (134.9mm)
UNIT OPEN HEIGHT:	5-15/16" (150.8mm)
DIE HEIGHT:	2-19/32" (65.9mm)
MATERIAL FEED CLEARANCE:	3/16" (4.8mm)
MAX. MATERIAL THICKNESS (STAINLESS STEEL):	1/16" (1.6mm)

MIN. MATERIAL THICKNESS: (MILD STEEL):	22 GA./030" (.76mm)
MAX. MATERIAL THICKNESS (MILD STEEL):	10 GA./134" (3.4mm)
MIN. DIE CLEARANCE:	.006" (.15mm) T.D.C.
DIE CLEARANCE:	set at factory for specific material types and thickness.

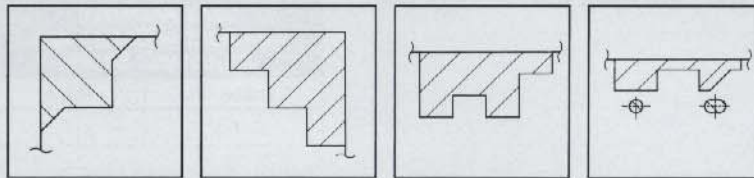
Note: Punch & Die steels on Edge Notch Units are not interchangeable. Units must be returned to factory for replacement. Spare Punch & Die steels can be supplied with new Units.

### SERIES B - EDGE NOTCH UNITS

Cat. No.	Price	Size of Notch Depth - Width A B	C	D	Cat. No.	Price	Size of Notch Depth - Width A B	C	D
7210		1 1/2" x 1"	3"	8 1/4"	7250		1 1/2" x 5"	8"	8 1/4"
7310		3" x 1"	5"	9 3/4"	7350		3" x 5"	8"	9 3/4"
7220		1 1/2" x 2"	5"	8 1/4"	7260		1 1/2" x 6"	10"	8 1/4"
7320		3" x 2"	5"	9 3/4"	7360		3" x 6"	9"	9 3/4"
7230		1 1/2" x 3"	7"	8 1/4"	7270		1 1/2" x 7"	10"	8 1/4"
7330		3" x 3"	6"	9 3/4"	7370		3" x 7"	10"	9 3/4"
7240		1 1/2" x 4"	7"	8 1/4"	7280		1 1/2" x 8"	11"	8 1/4"
7340		3" x 4"	7"	9 3/4"	7380		3" x 8"	11"	9 3/4"



### IRREGULAR NOTCH AND PUNCH COMBINATIONS AVAILABLE



B SERIES

For Standard Notch sizes, specify catalog number and material thickness. For Intermediate Notch sizes, specify catalog number, dimensions A & B. Irregular Notching Units and Combination Notch and Perforating Units are made to customer specifications. Send sketch for quotation.

UNIPUNCH

Exacta Precision Ltd. Toll Free Tel: 1.800.268.5573 Email Info@exactapunch.com