

# B SERIES Corner NOTCH

## SPECIFICATIONS & OPERATING INSTRUCTIONS

OPERATING SHUT HEIGHT: 5-1/2" (139.7mm)  
 MIN. SHUT HEIGHT: 5-5/16" (134.9mm)  
 UNIT OPEN HEIGHT: 5-7/8" (149.2mm)  
 DIE HEIGHT: 2-19/32" (65.9mm)  
 MAX. MATERIAL THICKNESS  
 (MILD STEEL): 10 GA./.134" (3.4mm)

MATERIAL FEED CLEARANCE: 3/16" (4.8mm)  
 MIN. DIE CLEARANCE: Die Clearance is  
 preset at factory  
 for notching from  
 22 GA./.030" (.76mm)  
 MAX. MATERIAL THICKNESS  
 (STAINLESS STEEL): 1/16" (1.6mm)

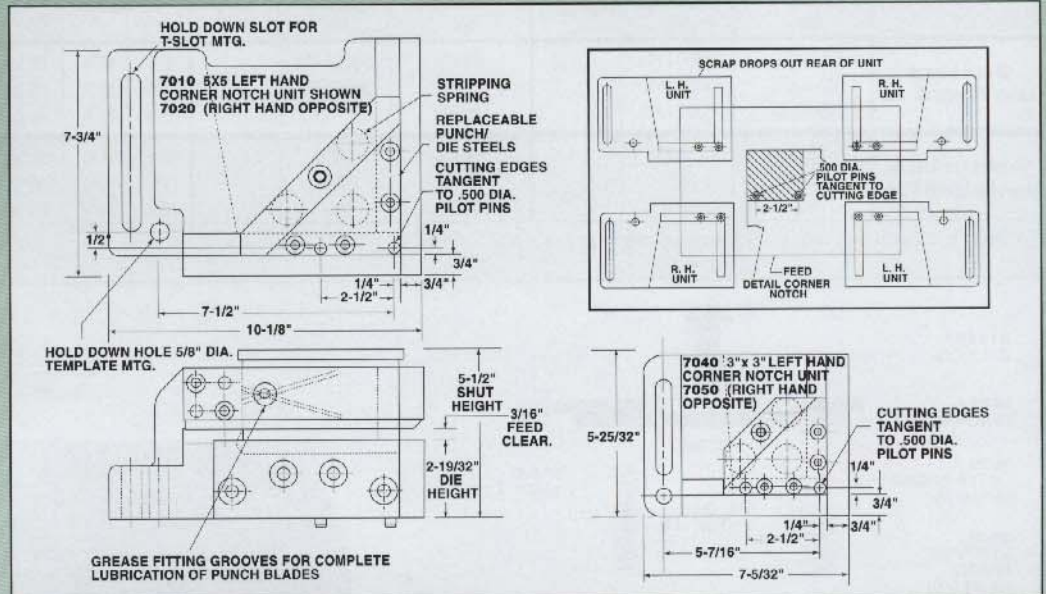
Note: All Corner Notching Units have replaceable Punch and Die steels.



### NOTCHING UNITS

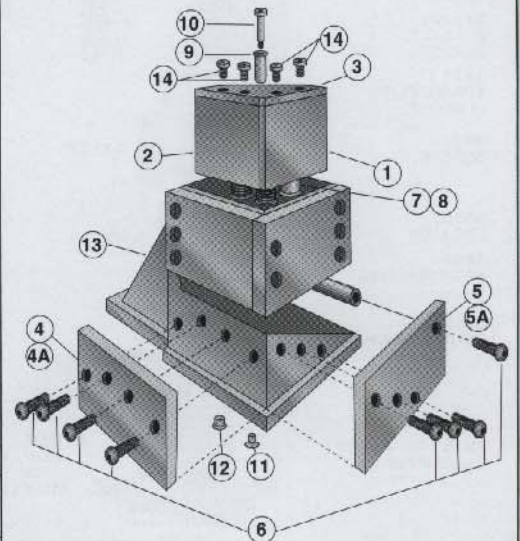
Type	Cat. No.	Price	Max. Notch Dia.	Ship. Wt.
L.H.	7010		5" x 5"	60 lbs.
	7040		3" x 3"	35 lbs.
R.H.	7020		5" x 5"	60 lbs.
	7050		3" x 3"	35 lbs.

### B Series – Corner Notch Units: 5" x 5" and 3" x 3"

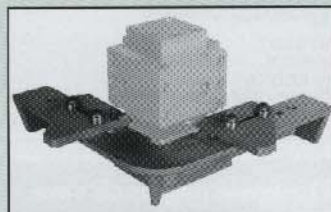


B SERIES

		7010		7020		7040		7050	
Item No.	Parts Description	Cat. No.	Price	Cat. No.	Price	Cat. No.	Price	Cat. No.	Price
1	Punch Blade (long)	7091		7091		7004		7004	
2	Punch Blade (short)	7090		7090		7003		7003	
3	Punch Plate	6074		6074		7039		7039	
4	Die Steel (side)	—	—	—	—	7044		7045	
4A	Die Steel (long)	6080		6081		—	—	—	—
5	Die Steel (front)	—	—	—	—	7046		7047	
5A	Die Steel (short)	6082		6083		—	—	—	—
6	Set of Die Screws	6002 (set of 8)		6002 (set of 8)		7052 (set of 6)		7052 (set of 6)	
7	Spring (3 req'd)	7540		7540		7540		7540	
8	Spring Cage	7043		7043		7043		7043	
9	Retainer	2476		2476		2476		2476	
10	Stripper Bolt	91400		91400		91400		91400	
11	Round Pilot Pin	1006		1006		1006		1006	
12	Diamond Pilot Pin	1116		1116		1116		1116	
13	Holder & Cap Ass'y (includes 2 pilot pins and punch retainer)	7018		7028		7038		7058	
14	Punch Plate Screw	91080		91080		91077		91077	



### 6060 and 6050 Gaging Methods



Gaging plate with built-in scales and adjustable stops  
**6060 /**



Adjustable side gages for each cutting side  
**Set of 2 – 6050 /**

UNIPUNCH