

SPECIFICATIONS & OPERATING INSTRUCTIONS

OPERATING SHUT HEIGHT:	8-3/8" (212.7mm)
MIN. SHUT HEIGHT:	8-3/16" (208.0mm)
UNIT OPEN HEIGHT:	9" (228mm)
DIE HEIGHT:	3-1/2" (88.9mm)
MIN. MATERIAL THICKNESS:	22 GA. (.76mm)

MIN. DIE CLEARANCE:	Die Clearance is preset at factory	
MAX. MATERIAL THICKNESS (MILD STEEL):	1/4" (6.4mm)	
MAX. MATERIAL THICKNESS (STAINLESS STEEL):	3/32" (2.4mm)	

6300 SERIES

Flat Stock Cutoff Units

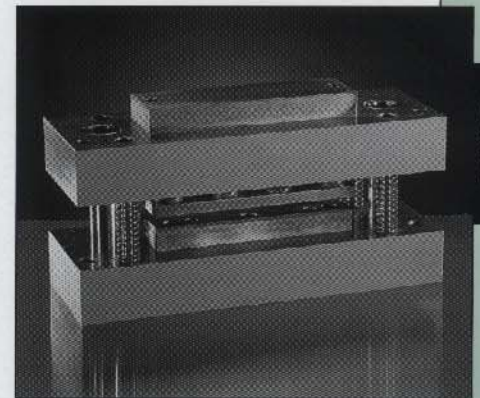
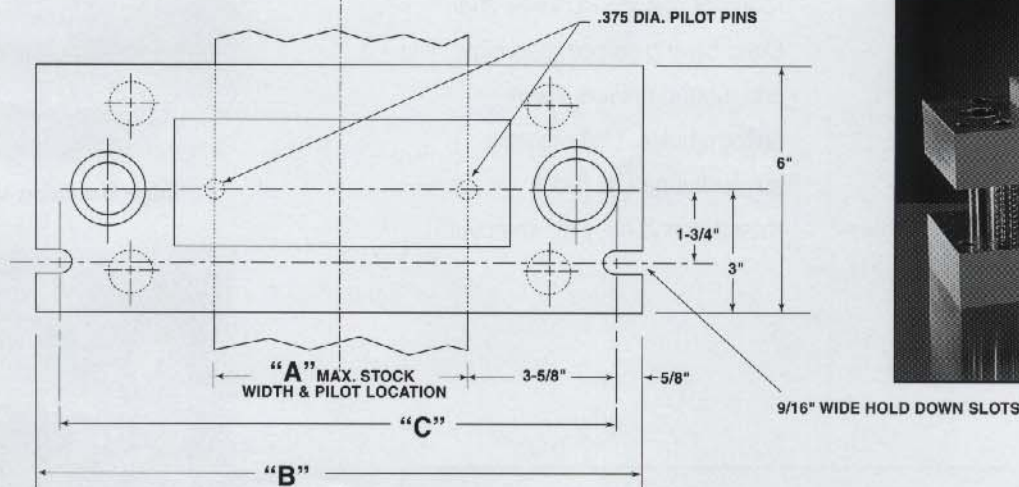
COMPLETE UNITS	
Catalog No.	Price
6300-200	
6300-400	
6300-600	
6300-800	

COMMON DIMENSIONS				
Max. Cutoff Width A	B	C	Max. Tonnage	Shipping Weight
2"	10 1/2"	9 1/4"	14	85 lbs.
4"	12 1/2"	11 1/4"	28	101 lbs.
6"	14 1/2"	13 1/4"	42	116 lbs.
8"	16 1/2"	15 1/4"	56	133.5 lbs.

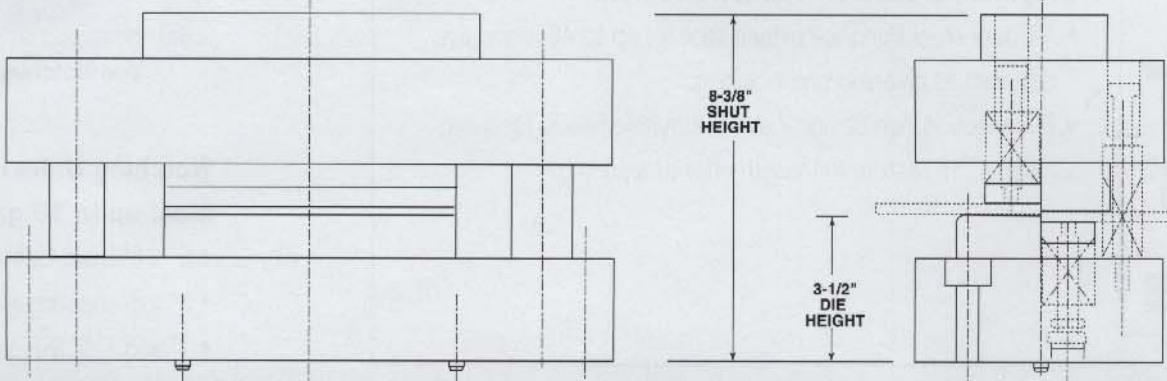
Note: For sizes not shown, contact Exacta Punch Quotation Department for application information and pricing.

Note: Punch & Die steels on Flat Stock Cutoff Units are not interchangeable. Units must be returned to factory for replacement. Spare Punch & Die steels can be supplied with new Units.

UniPunch Cutoff Units are a self-contained two post die set with pressure pads front and rear. There are (2) .375 dia. Pilot Pins in line with the cutting edge and (2) hold down locations for quick and accurate positioning of the unit. This self-contained Cutoff Unit has a compatible shut height with UniPunch Series "A" Unitized Tooling. This unit can be mounted in a Press or Press Brake adjacent to existing unitized tooling or stand alone cut to length applications up to 8" wide x 1/4" (6.4 mm) thick m.s. max.



A SERIES



Exacta Precision Ltd. Toll Free Tel: 1.800.268.5573 Email Info@exactapunch.com

UNIPUNCH