

A SERIES

Vee

NOTCH

**SPECIFICATIONS & OPERATING INSTRUCTIONS**

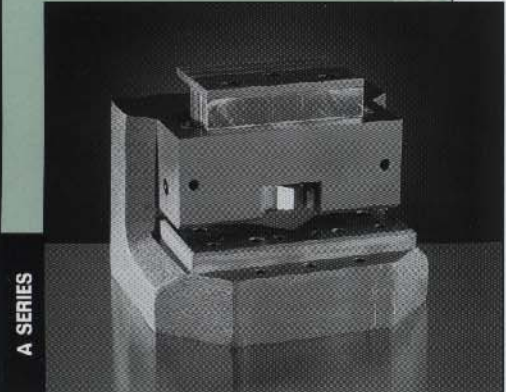
OPERATING SHUT HEIGHT: 8-3/8" (212.7mm)  
 MIN. SHUT HEIGHT: 8-3/16" (208.0mm)  
 UNIT OPEN HEIGHT: 9" (228.6mm)  
 DIE HEIGHT: 3-1/2" (88.9mm)  
 MAX. MATERIAL THICKNESS (MILD STEEL): 1/4" (6.4mm)

MIN. MATERIAL THICKNESS: 22 GA./ .030" (.76mm)  
 DIE CLEARANCE: preset at factory  
 MAX. MATERIAL THICKNESS (STAINLESS STEEL): 3/32" (2.4mm)

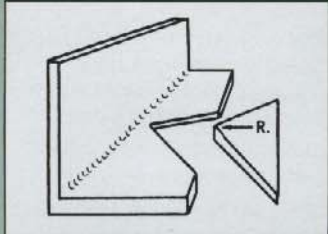
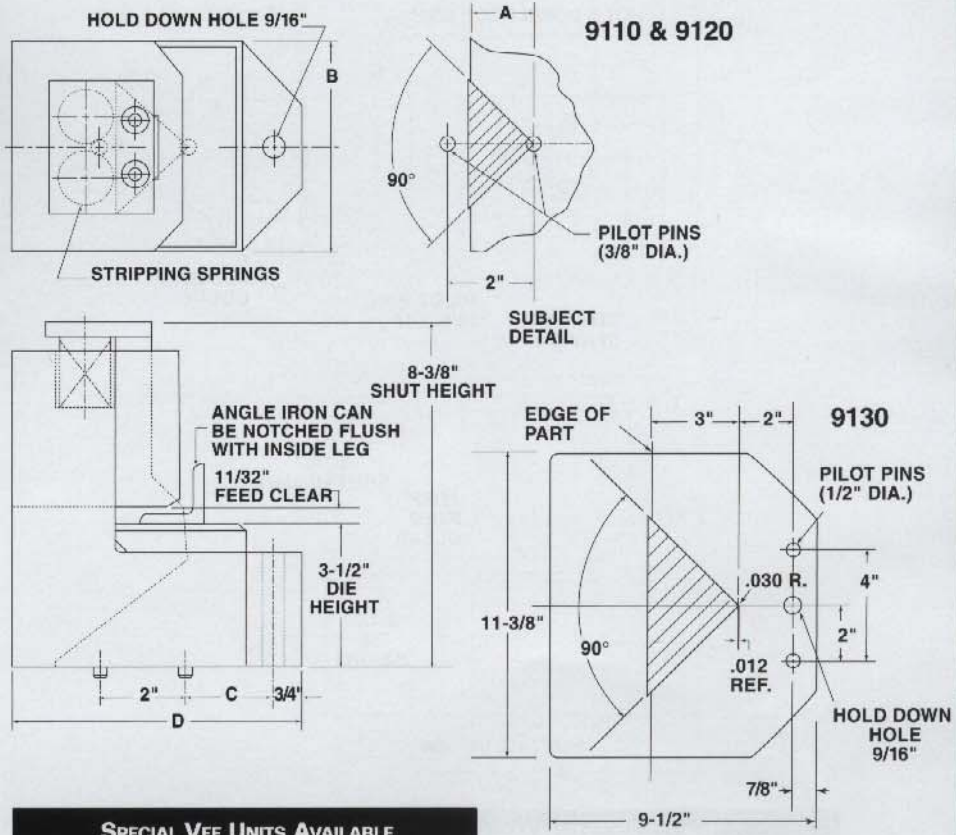
**Note: Punch & Die steels on Vee Notch Units are not interchangeable. Units must be returned to factory for replacement. Spare Punch and Die steels can be supplied with new Units.**

**A SERIES - VEE NOTCH UNITS**

Cat. No.	Price	Depth A	Holder Width B	C	D	Shipping Weight
9110		1"	4 3/4"	1 1/16"	6 3/4"	48 lbs.
9120		1 1/2"	6 1/2"	2 1/8"	7 1/2"	56 lbs.
9130		3"	11 1/2"	—	9 1/2"	132 lbs.



A SERIES



Note: When notching angle iron, a 1/8" radius on Notching Blade is recommended.

Consult Exacta Punch Quotations Department  
 Toll Free Tel: 1.800.268.5573

**SPECIAL VEE UNITS AVAILABLE**

Special Vee Units with less than 90° available, also notch angles over 90° can be supplied in Edge Notch Units. Contact UniPunch Quotations Department for pricing.

**UNIPUNCH**

Exacta Precision Ltd. Toll Free Tel: 1.800.268.5573 Email [Info@exactapunch.com](mailto:Info@exactapunch.com)