

## SPECIFICATIONS & OPERATING INSTRUCTIONS

OPERATING SHUT HEIGHT: 8-3/8" (212.7mm)  
 MIN. SHUT HEIGHT: 8-3/16" (208.0mm)  
 UNIT OPEN HEIGHT: 9" (228.6mm)  
 DIE HEIGHT: 3-1/2" (88.9mm)  
 MATERIAL FEED CLEARANCE: 11/32" (8.7mm)  
 MAX. MATERIAL THICKNESS (STAINLESS STEEL): 3/32" (2.4mm)

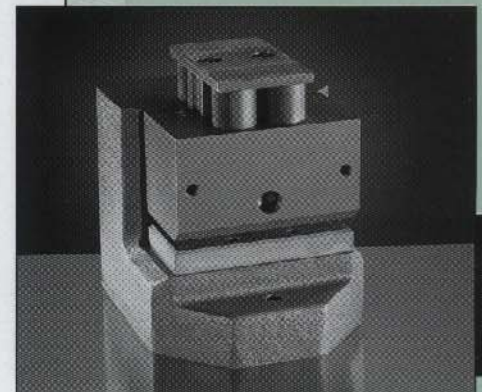
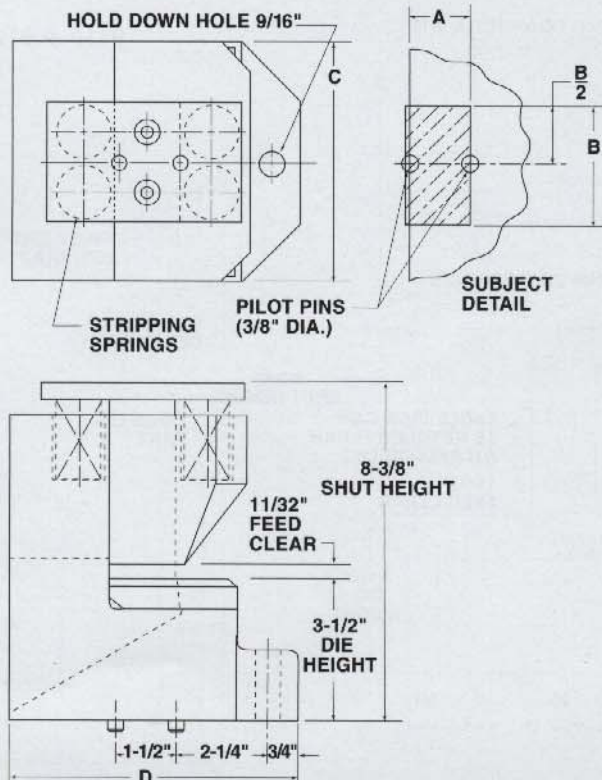
MIN. MATERIAL THICKNESS: (MILD STEEL): 22 GA./ .030" (.76mm)  
 MAX. MATERIAL THICKNESS (MILD STEEL): 1/4" (6.4mm)  
 MIN. DIE CLEARANCE: .006" (.15mm) T.D.C.  
 DIE CLEARANCE: set at factory for specific material types and thickness.

# A SERIES Edge NOTCH

### A SERIES - EDGE NOTCH UNITS

Cat. No.	Price	Size of Notch Depth - Width A B	C	D	Cat. No.	Price	Size of Notch Depth - Width A B	C	D
6210		1 1/2" x 1"	3"	8 1/4"	6250		1 1/2" x 5"	9"	8 1/4"
6310		3" x 1"	5"	9 3/4"	6350		3" x 5"	9"	9 3/4"
6220		1 1/2" x 2"	5"	8 1/4"	6260		1 1/2" x 6"	10"	8 1/4"
6320		3" x 2"	5"	9 3/4"	6360		3" x 6"	10"	9 3/4"
6230		1 1/2" x 3"	7"	8 1/4"	6270		1 1/2" x 7"	11"	8 1/4"
6330		3" x 3"	7"	9 3/4"	6370		3" x 7"	11"	9 3/4"
6240		1 1/2" x 4"	8"	8 1/4"	6280		1 1/2" x 8"	14"	8 1/4"
6340		3" x 4"	8"	9 3/4"	6380		3" x 8"	14"	9 3/4"

**Note: Punch & Die steels on Edge Notch Units are not interchangeable. Units must be returned to factory for replacement. Spare Punch and Die steels can be supplied with new Units.**

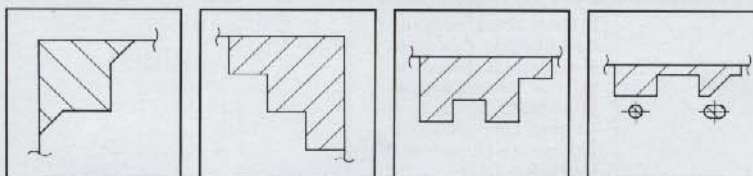


A SERIES

For standard Notch sizes, specify catalog number, material thickness and type. For intermediate Notch sizes, specify catalog number, dimensions A & B.

Irregular Notching Units and Combination Notch and Perforating Units are made to customer specifications. Send sketch for quotation.

### IRREGULAR NOTCH AND PUNCH COMBINATIONS AVAILABLE



For Pricing Information Contact Exacta Punch Quotation Department

Exacta Precision Ltd. Toll Free Tel: 1.800.268.5573 Email [Info@exactapunch.com](mailto:Info@exactapunch.com)

UNIPUNCH