

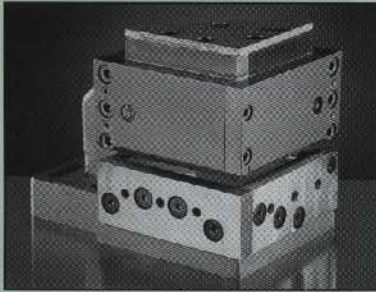
A SERIES Corner NOTCH

SPECIFICATIONS & OPERATING INSTRUCTIONS

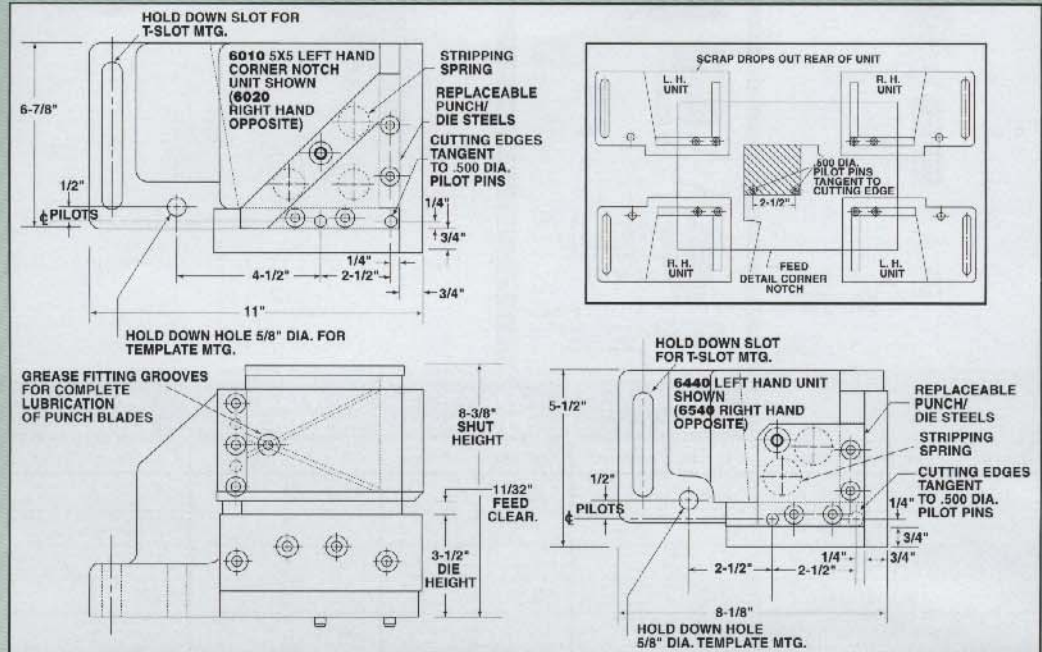
OPERATING SHUT HEIGHT: 8-3/8" (212.7mm)
 MIN. SHUT HEIGHT: 8-3/16" (208.0mm)
 UNIT OPEN HEIGHT: 9" (228.6mm)
 DIE HEIGHT: 3-1/2" (88.9mm)
 MAX. MATERIAL THICKNESS (MILD STEEL): 1/4" (6.4mm)

MATERIAL FEED CLEARANCE: 11/32" (8.7mm)
 MIN. DIE CLEARANCE: Die Clearance is preset at factory for notching from 22 GA./0.030" (.76 mm)
 MAX. MATERIAL THICKNESS (STAINLESS STEEL): 3/32" (2.4mm)

Note: All Corner Notching Units have replaceable Punch and Die steels.



A Series – Corner Notch Units: 5" x 5" and 3" x 3"

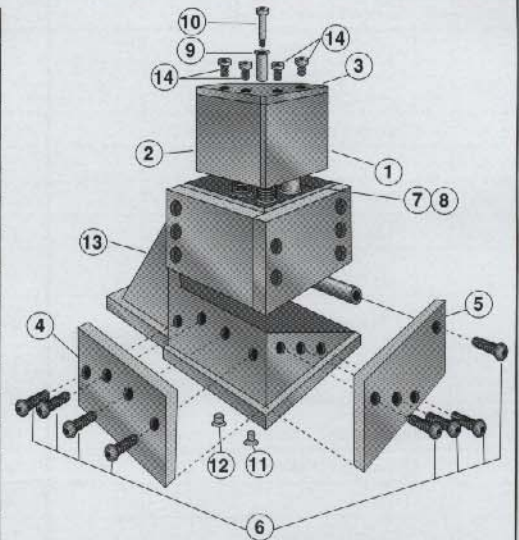


NOTCHING UNITS

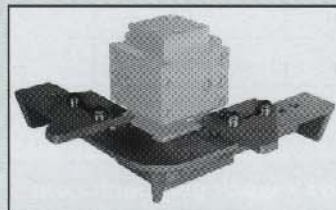
Type	Cat. No.	Price	Max. Notch Dia.	Ship. Wt.
L.H.	6010		5" x 5"	102 lbs.
	6440		3" x 3"	58 lbs.
R.H.	6020		5" x 5"	102 lbs.
	6450		3" x 3"	58 lbs.

A SERIES

Item No.	Parts Description	6010		6020		6440		6450	
		Cat. No.	Price	Cat. No.	Price	Cat. No.	Price	Cat. No.	Price
1	Punch Blade (long)	6091		6091		6404		6404	
2	Punch Blade (short)	6090		6090		6403		6403	
3	Punch Plate	6074		6074		6439		6439	
4	Die Steel (long)	6080		6081		7046		7047	
5	Die Steel (short)	6082		6083		7044		7045	
6	Set of Die Screws	6002 (set of 8)		6002 (set of 8)		7052 (set of 6)		7052 (set of 6)	
7	Spring (2 or 3 req'd)	6040		6040		6040		6040	
8	Spring Cage	6043		6043		6043		6043	
9	Retainer	2476		2476		2476		2476	
10	Stripper Bolt	91401		91401		91401		91401	
11	Round Pilot Pin	1006		1006		1006		1006	
12	Diamond Pilot Pin	1116		1116		1116		1116	
13	Holder & Cap Ass'y (includes 2 pilot pins and punch retainer)	6018		6028		6438		6458	
14	Punch Plate Screw	91080		91080		91080		91080	



6060 and 6050 Gaging Methods



Gaging plate with built-in scales and adjustable stops
6060 /



Adjustable side gages for each cutting side
Set of 2 – 6050 /

UNIPUNCH