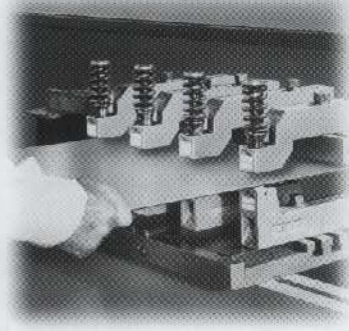


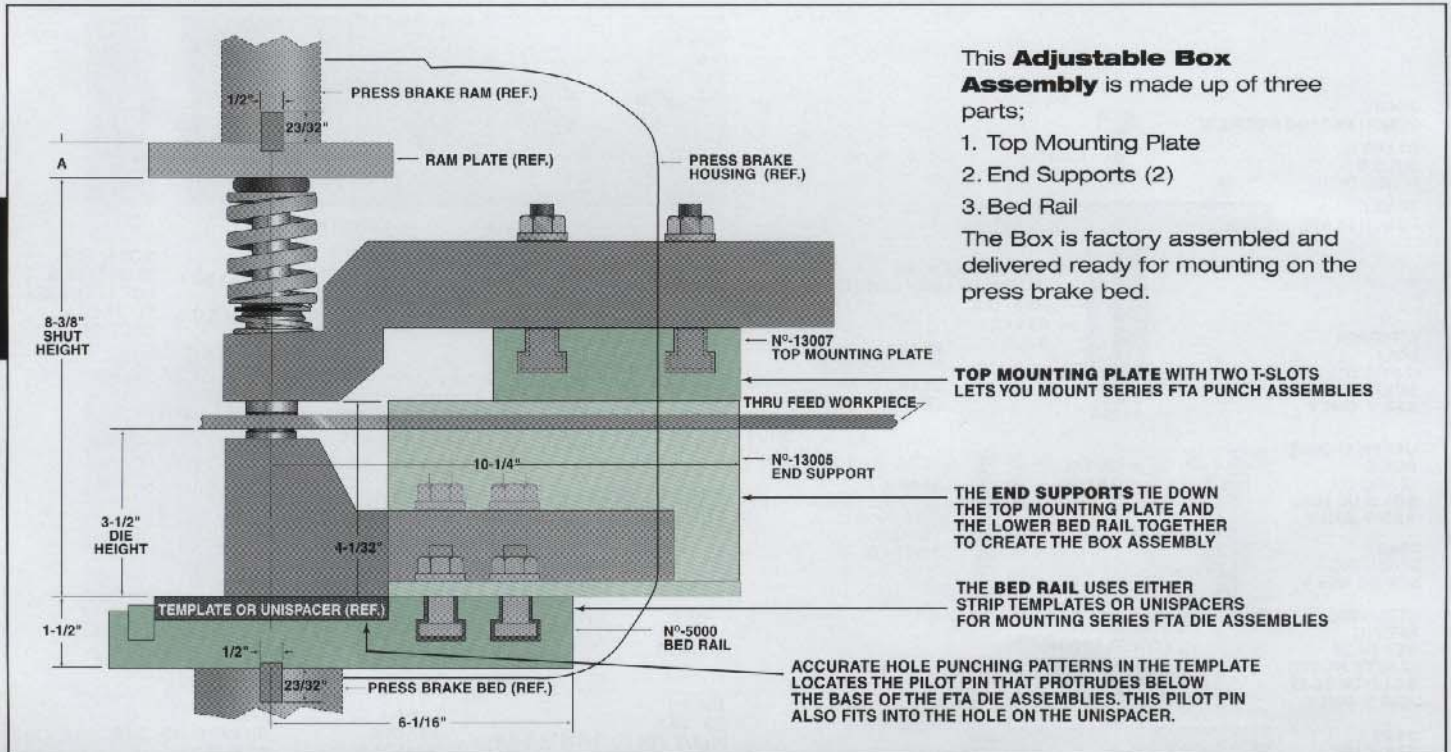
FTA Series

Unlimited throat depth
hole punching system



UniPunch Series "FTA" Hole Punching Units punch holes in sheets where the throat depth of Unitized Units is a limiting factor. These Units are designed to accommodate the same interchangeable punch assembly parts and Die Buttons used in Series "A" Hole Punching Units.

Box Assembly for Mounting FTA Units in Press Brakes



BOX ASSEMBLIES FOR MOUNTING SERIES FTA HOLE PUNCHING UNITS

Catalog No.	Overall Length	Nominal Working Area	Price	Shipping Weight
13000-6	*7'	6'		452 lbs.
13000-8	9'	8'		577 lbs.
13000-10	11½'	10'		735 lbs.
13000-12	13½'	12'		861 lbs.

Note: See Mounting Section, page 15, for Ram Plate selection.

* Recommended minimum length. Intermediate and longer lengths available on application. UniPunch is equipped to provide required templates.

UNIPUNCH

Exacta Precision Ltd. Toll Free Tel: 1.800.268.5573 Email Info@exactapunch.com