

A-1[™]

25.4mm width

SPECIFICATIONS & OPERATING INSTRUCTIONS

OPERATING SHUT HEIGHT:	8-3/8" (212.7mm)
MIN. SHUT HEIGHT:	8-3/16" (208.0mm)
UNIT OPEN HEIGHT:	9-1/8" (231.8mm)
DIE HEIGHT:	3-1/2" (88.9mm)
MATERIAL FEED CLEARANCE:	7/16" (11.1mm)
MIN. DIE CLEARANCE:	.006" (.15mm)
MAX. MAT. THK. (M.S.):	1/4" (6.4mm)

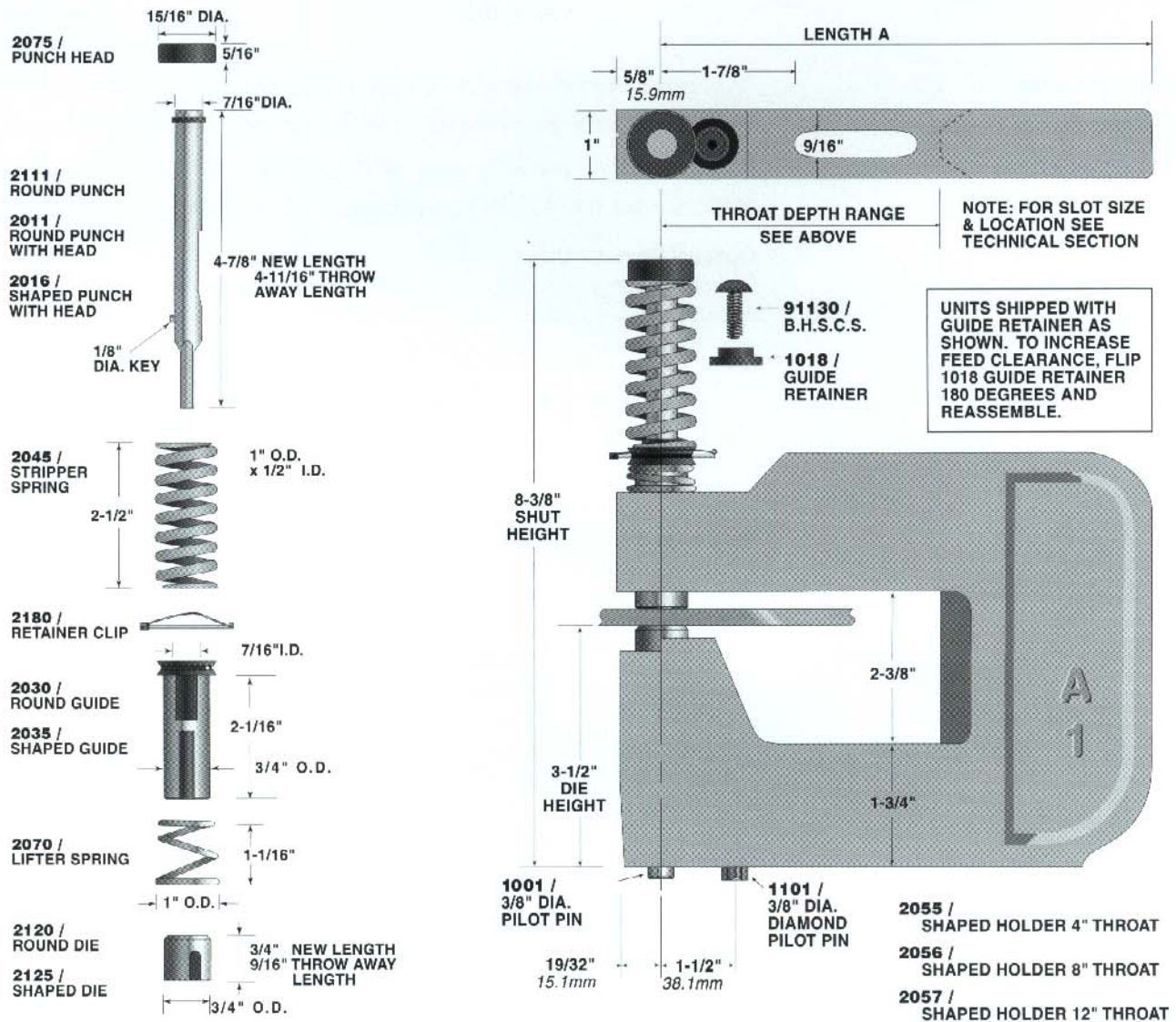
MAX. PUNCH DIAMETER:	.3125" (7.93mm) in 1/4" (6.4mm) M.S. .4375" (11.11mm) in 1/8" (3.18mm) M.S.
MIN. PUNCH DIAMETER:	.0937" (2.38mm)
MAX. SQUARE:	.309" (7.85mm)
MIN. SHAPE DIMENSION:	.0937" (2.38mm)
MAX. MAT. THK. (S.S.):	3/32" (2.4mm)

KITS AND SHIMS

Shaped hole conversion kit:	7111 /
Key kit:	9300 /
Hardware kit:	9393 /
Punch shim:	N.A.
Die shim:	1091-12 pk. / 1091-48 pk. / 1/16" thk./2 max.

	ROUND UNITS			*SHAPED UNITS			COMMON DIMS.		
	Model No.	Catalog No.	Price	Model No.	Catalog No.	Price	Throat Depth	Length A	Shipping Weight
BASE UNITS LESS PUNCH & DIE	4A-1-LPD	2003-LPD		4SA-1-LPD	2005-LPD		4"	7"	8 lbs.
	8A-1-LPD	2000-LPD		8SA-1-LPD	2006-LPD		8"	11"	10 lbs.
	12A-1-LPD	2001-LPD		12SA-1-LPD	2007-LPD		12"	15"	13.5 lbs.
COMPLETE UNITS (Includes Punch & Die)	4A-1	2003		4SA-1	2005		4"	7"	8.5 lbs.
	8A-1	2000		8SA-1	2006		8"	11"	10.5 lbs.
	12A-1	2001		12SA-1	2007		12"	15"	14 lbs.

*To order a shaped unit with round punch & die, add the suffix "- RPD"



A SERIES

UNIPUNCH

Exacta Precision Ltd. Toll Free Tel: 1.800.268.5573 Email Info@exactapunch.com