

DIEMAKERS' SUPPLIES

Service We Deliver and Quality You Can Depend On

DANLY IEM is a leading manufacturer of die sets and die component products supplied globally to the parts forming industry. Backed by years of tool and die experience, quality and innovation are some of the reasons why our name is respected throughout the world. We have taken the lead role in creating and bringing new products to customers and helping them find solutions that improve their operations. Based on the capabilities **DANLY IEM** offers, we can help you to meet the demands of quick deliveries, technical support, quality products and competitive prices. **DANLY IEM** and its' broad distribution channels and direct sales personnel will assist you in any way to make your product a better and more profitable one.

Whether you purchase on-line or in person, you will receive the same reliable service **DANLY IEM** is known for. We understand the demanding schedules of die builders and production personnel and have developed efficient manufacturing processes to shorten product lead times as well as put inventory on our shelves so you can have it in your facility when you need it. Put the **DANLY IEM** network to work for you. We've got the service you've been looking for.

Included in our full line offering are both inch and metric size die sets and die components that are designed to numerous die standards including ISO, NAAMS, JIS and many large automotive and appliance manufacturers' standards. The complete product offering includes:

- Ball bearing and friction style die sets including custom and catalog sets
- Machined plate
- Guide posts & bushings
- ISO and JIS Die springs
- In-die tapping units for both mechanical and hydraulic presses
- Formathane® Urethane springs, strippers, sheets, bars, rods and die cover film
- Diemakers' supplies
- Standard and self-lubricating wear product including wear plate, wear strips, gibs, keeper plates and guide blocks
- Cam units, including Mini™, Aerial and Die Mount styles
- Accubend™ Rotary Benders
- Standard and Ball lock punches and retainers
- Air presses
- Pad retainers
- Nitrogen gas springs



Our facility has been Registered by Underwriters Laboratories, Inc. to the International Organization for Standardization ISO 9001 Series Standards for Quality.
Registered by UL to ISO 9001.

CONTENTS

	PAGE NUMBER
Gold Bond Fasteners	
Bolts	2
Clamps	4
Nuts	5
Washers	6
Hoist Rings	
Center Pull	7
Side Pull	8
Socket Head Stripper Bolts	
Inch	9
Metric	10
Lifter Pins	11
Die Lubrication	12
Pry Bars	12
Punch Shanks	13
Pad Retainers	
Inch – Standard Mount	14
Inch – Reverse Mount	15
Metric – Standard Mount	16
Metric – Reverse Mount	16
Roller Stock Guides	17
Stock Pusher	18
Stop Blocks	19

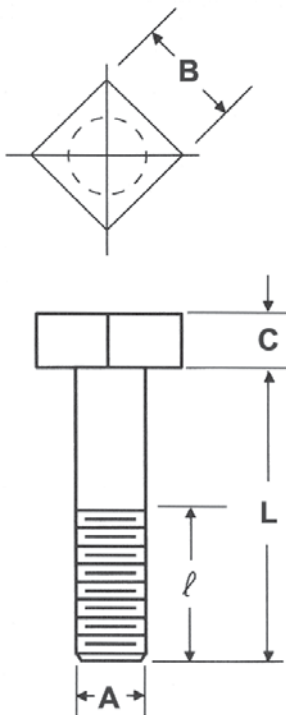
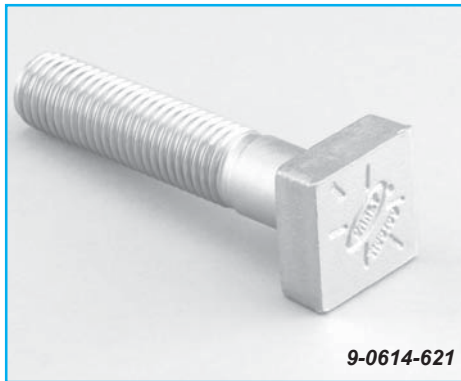
Gold Bond Fasteners – Bolts

Product Features

Gold Bond Press Room bolts are forged and utilize heat treated alloy steel. Forging provides extra strength by eliminating the weakness often found at the joint of head and shaft in machined bolts. The alloy steel is heat treated for a minimum tensile strength of 150,000 psi and a hardness of 302-352 BHN (33-39 RC).

Gold Bond bolts conform to or exceed current SAE-J-429 Grade 8 requirements and specifications of SAE-5-123. The threads are National Coarse - Class 2A.

Zinc plating protects against rust and corrosion. The gold finish identifies Gold Bond. These bolts are the superior press room bolt.



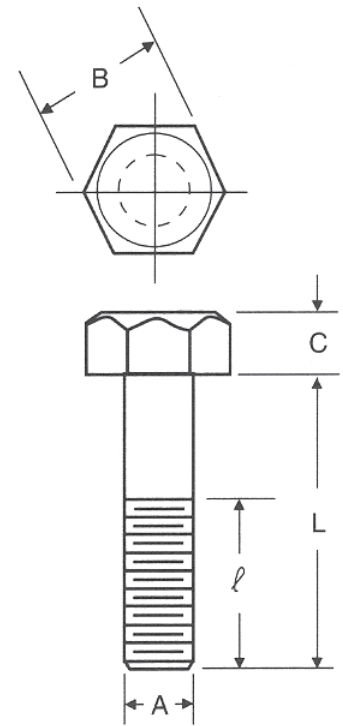
T-SLOT BOLTS

Part Number	Thread Size Dia. A (in)	L (in)	B (in)	C (in)	ℓ (in)
9-0511-621	5/8 – 11	2.75	1-1/8	13/32	1.75
9-0512-621		3.00			2.00
9-0514-621		3.50			2.50
9-0516-621		4.00			2.50
9-0520-621		5.00			3.50
9-0528-621		7.00			5.50
9-0612-621	3/4 – 10	3.00	1-5/16	17/32	2.00
9-0613-621		3.25			2.25
9-0614-621		3.50			2.50
9-0616-621		4.00			2.50
9-0620-621		5.00			3.50
9-0628-621		7.00			5.50
9-0636-621		9.00			4.50
9-0814-621		1 – 8			3.50
9-0816-621	4.00		3.00		
9-0818-621	4.50		3.50		
9-0820-621	5.00		4.00		
9-0824-621	6.00		4.00		
9-0828-621	7.00		4.00		
9-0832-621	8.00		4.00		
9-0836-621	9.00		4.00		
9-0844-621	11.00		5.00		
9-0852-621	13.00		5.00		
9-0862-621	15.50		5.00		
9-0872-621	18.00		5.00		
9-0882-621	20.50		5.00		

Gold Bond Fasteners – Bolts

HEX HEAD BOLTS

Part Number	Thread Size Dia. A (in)	L (in)	B (in)	C (in)	ℓ (in)
9-0612-721	3/4 – 10	3.00	1-1/4	1/2	2.00
9-0614-721		3.50			2.50
9-0616-721		4.00			3.00
9-0618-721		4.50			2.50
9-0620-721		5.00			3.00
9-0624-721		6.00			4.00
9-0628-721		7.00			3.50
9-0632-721		8.00			3.50
9-0640-721		10.00			5.50
9-0812-721		1 – 8			3.00
9-0814-721	3.50		3.00		
9-0816-721	4.00		2.50		
9-0820-721	5.00		2.50		
9-0824-721	6.00		3.50		
9-0826-721	6.50		3.00		
9-0828-721	7.00		3.50		
9-0830-721	7.50		3.50		
9-0832-721	8.00		4.00		
9-0840-721	10.00		5.00		



Gold Bond Fasteners – Clamps

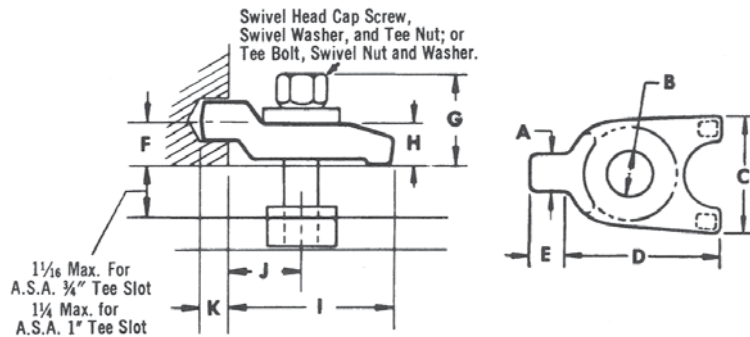
Product Features

These forged, carbon steel clamps are designed to permit moving the clamping bolt close to the clamped object. The offset construction provides ample room for the slot to pass over the head of the clamping bolt. The clamps are zinc plated for rust resistance and have a gold colored finish.

OFFSET CLAMPS

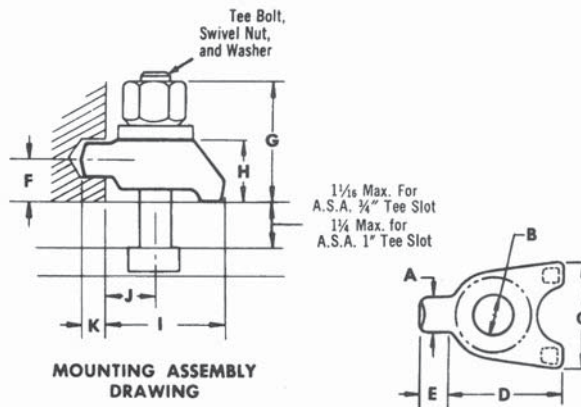


MOUNTING ASSEMBLY DRAWING



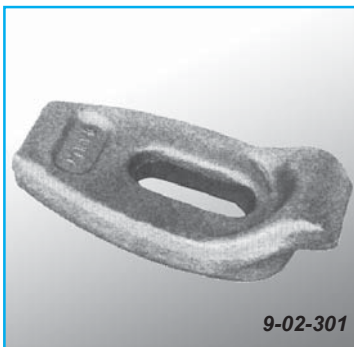
Part Number	Bolt Size (in)	A (in)	B (in)	C (in)	D (in)	E (in)	F (in)	G (in)	H (in)	I (in)	J (in)	K (in)
9-06-301	5/8 or 3/4	3/4	7/8	2-1/4	3	5/8	7/8	1-3/4	13/16	3	1-1/4	5/8
9-07-301	1	3/4	1-1/8	2-1/2	3-5/8	5/8	7/8	2	15/16	3 5/8	1-9/16	5/8

STRAIGHT CLAMPS

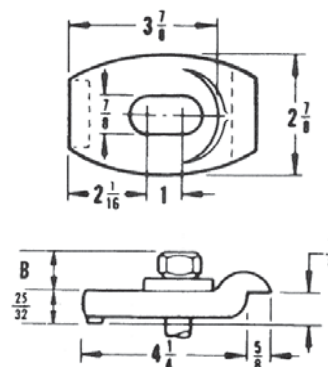


Part Number	Bolt Size (in)	A (in)	B (in)	C (in)	D (in)	E (in)	F (in)	G (in)	H (in)	I (in)	J (in)	K (in)
9-03-301	5/8 or 3/4	3/4	7/8	2-1/4	2-1/2	5/8	7/8	2-3/8	1-5/16	2-1/2	1	5/8
9-04-301	1	3/4	1-1/8	2-3/8	3	5/8	7/8	2-3/4	1-5/16	3	1-1/4	5/8

GOOSENECK CLAMPS



Part Number	Bolt
9-02-301	5/8 or 3/4



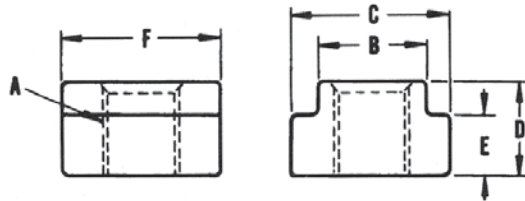
Gold Bond Fasteners – Nuts

Product Features

The T-Nuts are manufactured from material meeting SAE Grade 5. In addition, they are hardened to 302-352 BHN (33-39 RC). Sizes conform to ASA standards for use in 3/4" and 1" T-Slots.

The hex nuts and swivel nuts are manufactured from heat-treated, high-strength alloy steel and zinc plated for rust and corrosion protection.

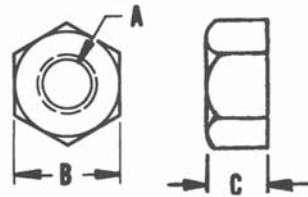
T-NUTS



Part Number	Slot Size	A	B	C	D	E	F
9-0511-661	3/4	5/8 – 11	25/32	1-5/16	25/32	17/32	1-5/16
9-0610-661	1	3/4 – 10	1-1/32	1-11/16	1	11/16	1-11/16



9-0511-661

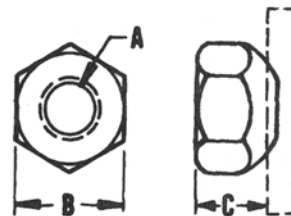


HEX NUTS

Part Number	Grade	A	B	C
9-0511-681	GRADE 5	5/8 – 11	1-1/16	5/8
9-0610-781	GRADE 8	3/4 – 10	1-1/4	3/4
9-0808-781	GRADE 8	1 – 8	1-5/8	1



9-0610-781



SWIVEL NUTS

Part Number	A	B	C
9-0511-691	5/8 – 11	1-1/16	11/16
9-0610-691	3/4 – 10	1-1/4	13/16
9-0808-691	1 – 8	1-5/8	1-1/16



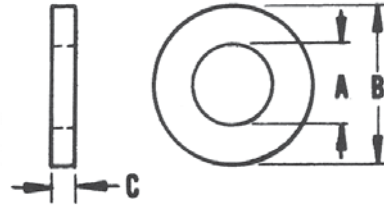
9-0511-691

Gold Bond Fasteners – Washers

Product Features

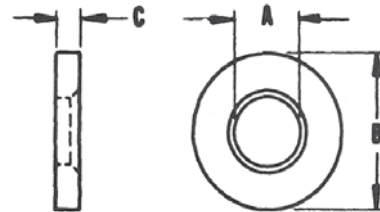
These washers are manufactured from heat-treated, high strength alloy steel and zinc plated for rust and corrosion protection.

FLAT WASHERS



Part Number	Nominal Size	A	B	C
9-0511-711	5/8	11/16	1-1/2	3/16
9-0613-711	3/4	13/16	1-3/4	1/4
9-0817-711	1	1-1/16	2-1/4	5/16

SWIVEL WASHERS

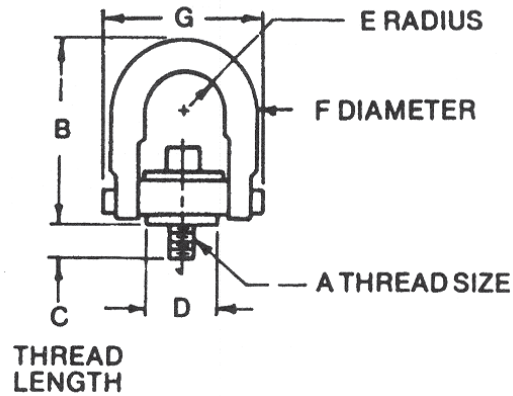


Part Number	Nominal Size	A	B	C
9-01-501	5/8	25/32	1-7/8	5/16
9-02-501	3/4	29/32	1-7/8	3/8
9-05-501	1	1-3/16	2-1/4	3/8

Hoist Rings – Center Pull

Product Features

Center pull hoist rings are manufactured from 4140 and have a black oxide finish. The clevis bolt, pins, base, washer and bushing are magnetic particle inspected.



Thread Size A	Load Capacity* (lbs)	STANDARD CLEVIS		LONG CLEVIS		Thread Length C	D	Radius E	Diam. F	G	Torque ¹ (lb.ft.)
		Part Number	B	Part Number	B						
5/16 – 18	800	9-0109-88	2.67	–	–	9/16	.75	.43	.38	1.84	7
3/8 – 16	1000	0-0309-88	2.67	–	–	9/16	.75	.43	.38	1.84	12
1/2 – 13	2500	0-0417-88	3.75	–	–	1-1/16	1.20	.69	.50	2.56	28
		0-0412-88	4.78	9-0412-89	6.72	3/4	1.50	.88	.75	3.52	28
		9-0416-88	4.78	9-0416-89	6.72	1	1.50	.88	.75	3.52	28
		9-0420-88	4.78	9-0420-89	6.72	1-1/4	1.50	.88	.75	3.52	28
5/8 – 11	4000	9-0516-88	4.78	9-0516-89	6.72	1	1.50	.88	.75	3.52	60
		9-0520-88	4.78	9-0520-89	6.72	1-1/4	1.50	.88	.75	3.52	60
3/4 – 10	5000	9-0616-88	4.78	9-0616-89	6.72	1	1.50	.88	.75	3.52	100
		9-0624-88	4.78	9-0624-89	6.72	1-1/4	1.50	.88	.75	3.52	100
	7000	9-0616-881	6.52	9-0616-891	8.11	1	2.31	1.40	1.00	5.14	100
		9-0624-881	6.52	9-0624-891	8.11	1-1/2	2.31	1.40	1.00	5.14	100
7/8 – 9	8000	9-0716-88	6.52	9-0716-89	8.11	1	2.31	1.40	1.00	5.14	160
1 – 8	10000	9-0820-88	6.52	9-0820-89	8.11	1-1/4	2.31	1.40	1.00	5.14	230
		9-0824-88	6.52	9-0824-89	8.11	1-1/2	2.31	1.40	1.00	5.14	230
		9-0836-88	6.52	9-0836-89	8.11	2-1/4	2.31	1.40	1.00	5.14	230
1-1/4 – 7	15000	9-1030-88	8.73	–	–	1-7/8	3.19	1.75	1.25	6.50	470
1-1/2 – 6	24000	9-1244-88	12.47	–	–	2-3/4	4.19	2.25	1.75	8.55	800
2 – 4-1/2	30000	9-1650-88	12.47	–	–	3-1/8	4.19	2.25	1.75	8.55	800

¹ Stated load capacity based on specific thread torques as shown in chart. It is recommended that these torques be used when installing hoist rings.

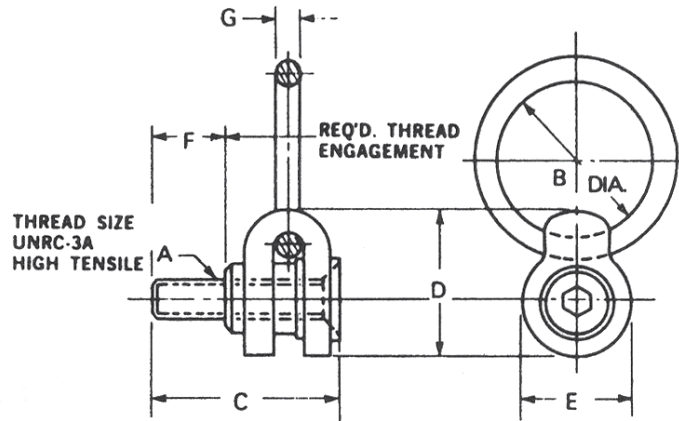
* Rated at 5:1 strength factor.

Hoist Rings – Side Pull



Product Features

Side pull hoist rings are manufactured from alloy steel and have a black oxide finish. The clevis, ring, bushing and cap screw are magnetic particle inspected. The clevis is x-rayed.



Part Number	Load Capacity*	A	B	C	D	E	F	G	Thread Torque ¹
9-01-87	650	5/16 – 18	2	2-1/8	2	1-1/2	5/8	3/8	3.5
9-03-87	800	3/8 – 16	2	2-3/8	2	1-1/2	3/4	3/8	4.5
9-04-87	1800	1/2 – 13	3	3-3/8	3-3/16	2-3/8	1	5/8	15.0
9-05-87	2500	5/8 – 11	3	3-5/8	3-3/16	2-3/8	1-1/4	5/8	25.0
9-06-87	4100	3/4 – 10	4	5	5	3-3/4	1-1/2	1	50.0
9-08-87	7100	1 – 8	4	5-3/8	5	3-3/4	2	1	90.0
9-10-87	14000	1-1/4 – 7	6	6-7/8	6-13/16	4-5/8	2	1-3/8	150.0
9-12-87	17200	1-1/2 – 6	6	7-7/8	6-13/16	4-5/8	2-1/2	1-3/8	250.0
9-16-87	29000	2 – 4-1/2	5-1/4 x 10-1/2	10	6-13/16	4-5/8	3-1/8	1-1/2	300.0

¹ Stated load capacity based on specific thread torques as shown in chart. It is recommended that these torques be used when installing hoist rings.

* Rated at 5:1 strength factor.

Socket Head Stripper Bolts – Inch

Product Features

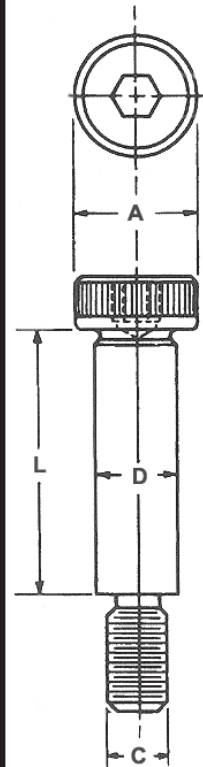
Socket head stripper bolts (shoulder screws) are manufactured to close tolerances specifically for tool and die work. They are made from alloy steel that is heat-treated for additional strength. The final product has close tolerances and fully formed threads for the United Class 3A fit.

The knurled heads makes for sure finger grips that allow for fast assembly. The accurate hex socket provides for non-slip internal wrenching.



9-1030, 0814 & 0412-56

Part Number	Diam. D (in)	Length L (in)	Thread Pitch	A	C	Part Number	Diam. D (in)	Length L (in)	Thread Pitch	A	C
9-0403-56	1/4	3/8	NC	3/8	#10	9-0824-56	1/2	3	NC	3/4	3/8
9-0404-56		1/2				9-0826-56		3-1/4			
9-0405-56		5/8				9-0828-56		3-1/2			
9-0406-56		3/4				9-0830-56		3-3/4			
9-0408-56		1				9-0832-56		4			
9-0410-56		1-1/4				9-0834-56		4-1/4			
9-0412-56	1-1/2	9-0836-56	4-1/2								
9-0503-56	5/16	3/8	NC	7/16	1/4	9-0838-56	5/8	4-3/4	NC	7/8	1/2
9-0504-56		1/2				9-0840-56		5			
9-0505-56		5/8				9-1010-56		1-1/4			
9-0506-56		3/4				9-1012-56		1-1/2			
9-0508-56		1				9-1014-56		1-3/4			
9-0510-56		1-1/4				9-1016-56		2			
9-0512-56	1-1/2	9-1018-56	2-1/4								
9-0514-56	1-3/4	9-1020-56	2-1/2								
9-0516-56	2	9-1022-56	2-3/4								
9-0603-56	3/8	3/8	NC	9/16	5/16	9-1024-56	3/4	3	NC	1.0	5/8
9-0604-56		1/2				9-1026-56		3-1/4			
9-0605-56		5/8				9-1028-56		3-1/2			
9-0606-56		3/4				9-1030-56		3-3/4			
9-0608-56		1				9-1032-56		4			
9-0610-56		1-1/4				9-1034-56		4-1/4			
9-0612-56	1-1/2	9-1036-56	4-1/2								
9-0614-56	1-3/4	9-1038-56	4-3/4								
9-0616-56	2	9-1040-56	5								
9-0618-56	2-1/4	9-1044-56	5-1/2								
9-0620-56	2-1/2	9-1048-56	6								
9-0622-56	2-3/4	9-1212-56	1-1/2								
9-0624-56	3	9-1214-56	1-3/4								
9-0626-56	3-1/4	9-1216-56	2								
9-0628-56	3-1/2	9-1218-56	2-1/4								
9-0630-56	3-3/4	9-1220-56	2-1/2								
9-0632-56	4	9-1222-56	2-3/4								
9-0804-56	1/2	1/2	NC	3/4	3/8	9-1224-56	3/4	3	NC	1.0	5/8
9-0805-56		5/8				9-1226-56		3-1/4			
9-0806-56		3/4				9-1228-56		3-1/2			
9-0808-56		1				9-1230-56		3-3/4			
9-0810-56		1-1/4				9-1232-56		4			
9-0812-56		1-1/2				9-1234-56		4-1/4			
9-0814-56	1-3/4	9-1236-56	4-1/2								
9-0816-56	2	9-1238-56	4-3/4								
9-0818-56	2-1/4	9-1240-56	5								
9-0820-56	2-1/2	9-1244-56	5-1/2								
9-0822-56	2-3/4	9-1248-56	6								



Socket Head Stripper Bolts – Metric



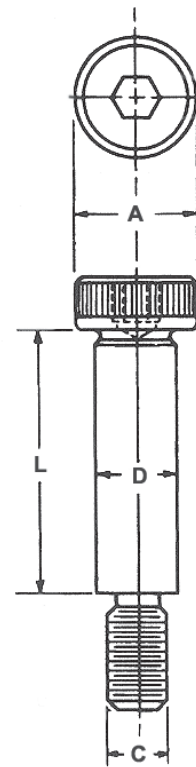
9-16090-96, 9-10040-96 & 9-06030-96

Product Features

Socket head stripper bolts (shoulder screws) are manufactured to close tolerances specifically for tool and die work. They are made from alloy steel that is heat-treated for additional strength. The final product has close tolerances and fully formed threads for the United Class 3A fit.

The knurled heads makes for sure finger grips that allow for fast assembly. The accurate hex socket provides for non-slip internal wrenching.

Part Number	Length L (mm)	Diameter D (mm)	Thread Pitch	A (mm)	C (mm)
9-06010-96	10	6	.080	10	M 5.0
9-06012-96	12				
9-06016-96	16				
9-06020-96	20				
9-06025-96	25				
9-06030-96	30	8	1.00	13	M 6.0
9-08012-96	12				
9-08016-96	16				
9-08020-96	20				
9-08025-96	25				
9-08030-96	30				
9-08040-96	40				
9-08050-96	50	10	1.25	16	M 8.0
9-10016-96	16				
9-10020-96	20				
9-10025-96	25				
9-10030-96	30				
9-10040-96	40				
9-10050-96	50				
9-10060-96	60				
9-10070-96	70				
9-10080-96	80				
9-12016-96	16				
9-12020-96	20				
9-12025-96	25				
9-12030-96	30				
9-12040-96	40				
9-12050-96	50				
9-12060-96	60				
9-12070-96	70				
9-12080-96	80				
9-12090-96	90				
9-12100-96	100	16	1.75	24	M12.0
9-16030-96	30				
9-16040-96	40				
9-16050-96	50				
9-16060-96	60				
9-16070-96	70				
9-16080-96	80				
9-16090-96	90				

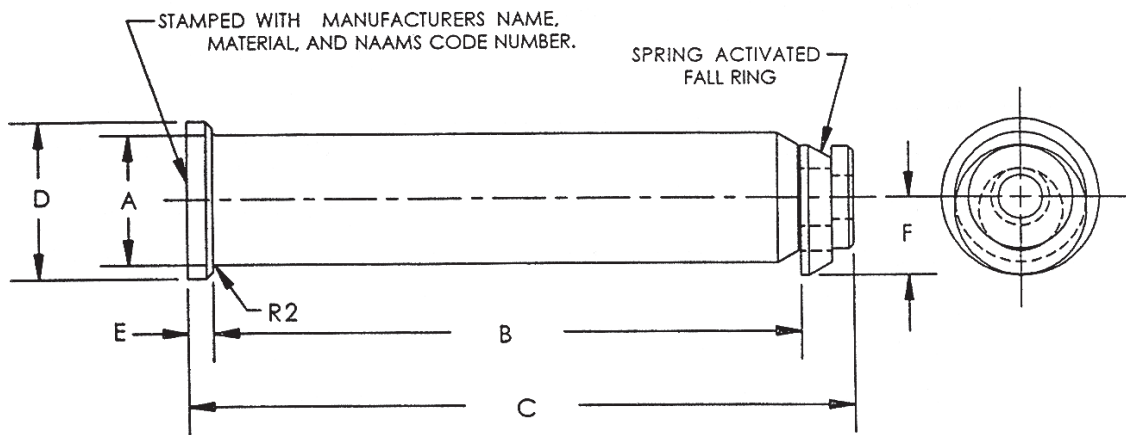


Lifter Pins – Metric

Product Features

Lifter pins are manufactured from 1144 steel and are commonly used to handle large die sets. They conform to NAAMS standards.

The internal spring provides added assurance that the fall ring will function properly during the course of the pin's use.



Part Number	NAAMS Code	A ⁺⁰ A _{-.03} (mm)	B (mm)	C (mm)	D (mm)	E (mm)	F (mm)	Total Die Wt. in Metric Tons (t)
LP35-125	L013512	35	125	165	45	10	21.5	0 – 2.72
LP50-190	L015019	50	190	230	63	10	31	2.72 – 9.07
LP63-280	L016328	63	280	320	76	10	37.5	9.07 – 36.28
LP80-320	L018032	80	320	370	89	15	46	36.28 – 72.57

Die Lubrication

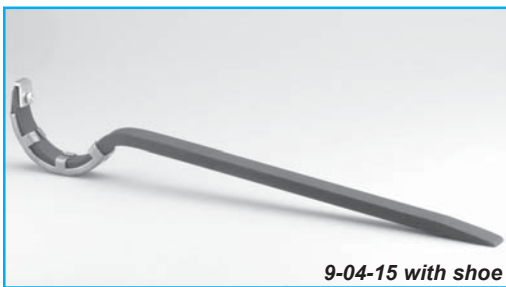


Product Features

This die lubricant is specially prepared to provide efficient lubrication for guide posts in plain bearing applications.

Part Number	Size
9-01-52	1 Quart
9-02-52	1 Gallon
9-02-521	55 Gallons
9-02-522	15 Gallons

Pry Bars



Product Features

This forged steel pry bar, with a black oxide finish, is a practical tool for use in separating punch and die holders without damage to the die.

With its soft tempered brass shoe and bronze alloy tip, the pry bar easily separates the die without harming surfaces. Both shoe and tip are easily removable and replaceable.

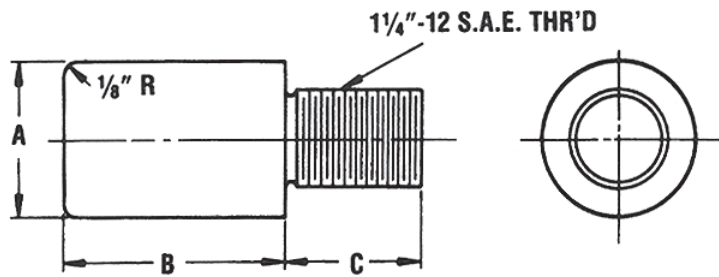
Overall length is 18-1/4."

Part Number	Description
9-01-15	Pry Bar, as forged
9-04-15	Pry Bar with tip and shoe
9-05-15	Tip & Shoe Package (2 tips, 2 shoes, screws & nuts)
9-06-15	Tip Package (6 tips, screws & nuts)

Punch Shanks

Product Features

Steel punch shanks are made to dimensions with accurately cut threads for use on any type of die set.



Part Number	Diameter A (in)	Length B (in)	Thread Length C (in)
8-2422-1	1-1/2	2-1/8	1-3/8
8-2424-1			1-1/2
8-2428-1			1-3/4
8-2432-1			2
8-2436-1			2-1/4
8-2440-1			2-1/2
8-2456-1			3-1/2
8-2522-1	1-9/16	2-1/8	1-3/8
8-2524-1			1-1/2
8-2528-1			1-3/4
8-2532-1			2
8-2536-1			2-1/4
8-2540-1			2-1/2
8-2556-1			3-1/2
8-3222-1	2	2-7/8	1-3/8
8-3224-1			1-1/2
8-3228-1			1-3/4
8-3232-1			2
8-3236-1			2-1/4
8-3240-1			2-1/2
8-3256-1			3-1/2
8-4022-1	2-1/2	2-7/8	1-3/8
8-4024-1			1-1/2
8-4028-1			1-3/4
8-4032-1			2
8-4036-1			2-1/4
8-4040-1			2-1/2
8-4056-1			3-1/2
8-4822-1	3	2-7/8	1-3/8
8-4824-1			1-1/2
8-4828-1			1-3/4
8-4832-1			2
8-4836-1			2-1/4
8-4840-1			2-1/2
8-4856-1			3-1/2

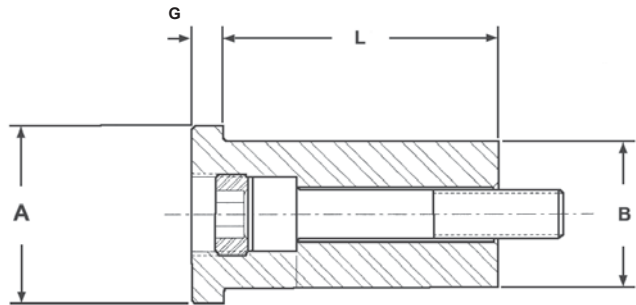
Pad Retainers – Inc Standard Mount



Product Features

Pad retainers are manufactured from 1144 steel and hardened to 28-34 Rockwell C-scale. They are machined to precise tolerances in order to retain the pad and assure parallelism during use.

The NP Series is also available, by special order, that offers three prongs as opposed to knurl.



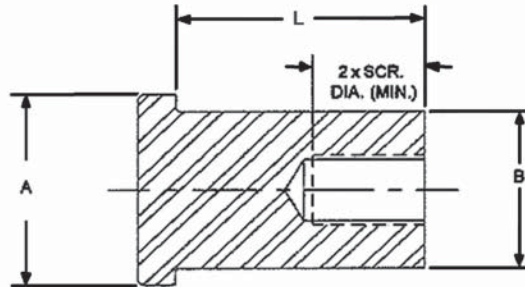
Part Number	Shank Diameter B (in)	Length L (in)	Shoulder Diameter A (in)	Shoulder Thickness G (in)
106-100	.81	1.00	1.06	.375
106-125		1.25		
106-150		1.50		
106-175		1.75		
106-200		2.00		
106-225		2.25		
106-250		2.50		
106-275		2.75		
106-300		3.00		
106-325		3.25		
106-350	3.50			
125-100	1.00	1.00	1.25	.50
125-125		1.25		
125-150		1.50		
125-175		1.75		
125-200		2.00		
125-225		2.25		
125-250		2.50		
125-275		2.75		
125-300		3.00		
125-325		3.25		
125-350		3.50		
125-375		3.75		
125-400		4.00		
125-450		4.50		
125-500		5.00		
125-550	5.50			
125-600	6.00			
162-125	1.25	1.25	1.62	.50
162-150		1.50		
162-175		1.75		
162-200		2.00		
162-225		2.25		
162-250		2.50		
162-275		2.75		
162-300		3.00		
162-325		3.25		
162-350		3.50		
162-375		3.75		

Part Number	Shank Diameter B (in)	Length L (in)	Shoulder Diameter A (in)	Shoulder Thickness G (in)
162-400	1.25	4.00	1.62	.50
162-450		4.50		
162-500		5.00		
162-550		5.50		
162-600		6.00		
187-100	1.50	1.00	1.87	.50
187-125		1.25		
187-150		1.50		
187-175		1.75		
187-200		2.00		
187-225		2.25		
187-250		2.50		
187-275		2.75		
187-300		3.00		
187-325		3.25		
187-350		3.50		
187-375		3.75		
187-400		4.00		
187-450		4.50		
187-500		5.00		
187-550	5.50			
187-600	6.00			
200-175	1.62	1.75	2.00	.50
200-200		2.00		
200-225		2.25		
200-250		2.50		
200-275		2.75		
200-300		3.00		
200-325		3.25		
200-350		3.50		
200-375		3.75		
200-400		4.00		
200-450		4.50		
200-500		5.00		
200-550	5.50			
200-600	6.00			

Pad Retainers – Inch Reverse Mount

Product Features

Pad retainers are manufactured from 1144 steel and hardened to 28-34 Rockwell C-scale. They are machined to precise tolerances in order to retain the pad and assure parallelism during use.



Part Number	Shank Diameter B (in)	Length L (in)	Shoulder Diameter A (in)
106-100R	.81	1.00	1.06
106-125R		1.25	
106-150R		1.50	
106-175R		1.75	
106-200R		2.00	
106-225R		2.25	
106-250R		2.50	
106-275R		2.75	
106-300R		3.00	
106-325R		3.25	
106-350R	3.50		
125-100R	1.00	1.00	1.25
125-125R		1.25	
125-150R		1.50	
125-175R		1.75	
125-200R		2.00	
125-225R		2.25	
125-250R		2.50	
125-275R		2.75	
125-300R		3.00	
125-325R		3.25	
125-350R		3.50	
125-375R		3.75	
125-400R		4.00	
125-450R		4.50	
125-500R		5.00	
125-550R	5.50		
125-600R	6.00		
162-125R	1.25	1.25	1.62
162-150R		1.50	
162-175R		1.75	
162-200R		2.00	
162-225R		2.25	
162-250R		2.50	
162-275R		2.75	
162-300R		3.00	
162-325R		3.25	
162-350R		3.50	
162-375R		3.75	

Part Number	Shank Diameter B (in)	Length L (in)	Shoulder Diameter A (in)
162-400R	1.25	4.00	1.62
162-450R		4.50	
162-500R		5.00	
162-550R		5.50	
162-600R		6.00	
187-150R		1.50	
187-175R	1.75		
187-200R	2.00		
187-225R	2.25		
187-250R	2.50		
187-275R	2.75		
187-300R	3.00		
187-325R	3.25		
187-350R	3.50		
187-375R	3.75		
187-400R	4.00		
187-450R	4.50		
187-500R	5.00		
187-550R	5.50		
187-600R	6.00		
200-175R	1.62	1.75	2.00
200-200R		2.00	
200-225R		2.25	
200-250R		2.50	
200-275R		2.75	
200-300R		3.00	
200-325R		3.25	
200-350R		3.50	
200-375R		3.75	
200-400R		4.00	
200-450R		4.50	
200-500R		5.00	
200-550R		5.50	
200-600R		6.00	

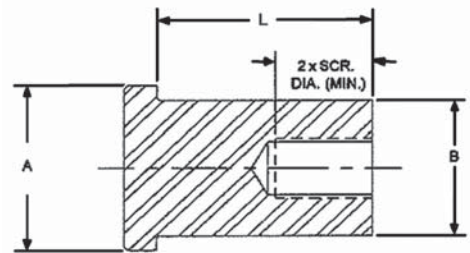
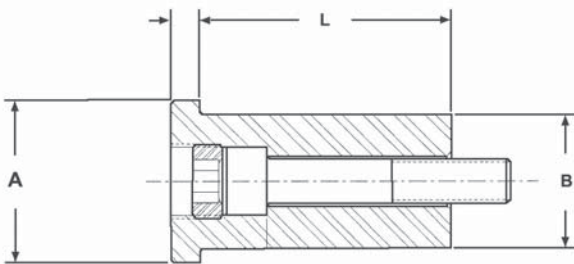
Pad Retainers

Standard and Reverse Mount – Metric



Product Features

Pad retainers are manufactured from 1144 steel and hardened to 28-34 Rockwell C-scale. They are machined to precise tolerances in order to retain the pad and assure parallelism during use.



STANDARD MOUNT

Part Number	Shank Diameter B (mm)	Length L (mm)	Shoulder Diameter A (mm)
NR50-30	40	30	50
NR50-40		40	
NR50-45		45	
NR50-50		50	
NR50-60		60	
NR50-65		65	
NR50-70		70	
NR50-75		75	
NR50-90		90	
NR50-115		115	
NR50-130		130	
NR50-140		140	
NR50-160		160	
NR70-40	60	40	70
NR70-45		45	
NR70-50		50	
NR70-60		60	
NR70-65		65	
NR70-70		70	
NR70-75		75	
NR70-90		90	
NR70-100		100	
NR70-115		115	
NR70-130		130	
NR70-140		140	
NR70-160		160	

REVERSE MOUNT

Part Number	Shank Diameter B (mm)	Length L (mm)	Shoulder Diameter A (mm)
NR50-30R	40	30	50
NR50-40R		40	
NR50-45R		45	
NR50-50R		50	
NR50-60R		60	
NR50-65R		65	
NR50-70R		70	
NR50-75R		75	
NR50-90R		90	
NR50-115R		115	
NR50-130R		130	
NR50-140R		140	
NR50-160R		160	
NR70-40R	60	40	70
NR70-45R		45	
NR70-50R		50	
NR70-60R		60	
NR70-65R		65	
NR70-70R		70	
NR70-75R		75	
NR70-90R		90	
NR70-100R		100	
NR70-115R		115	
NR70-130R		130	
NR70-140R		140	
NR70-160R		160	

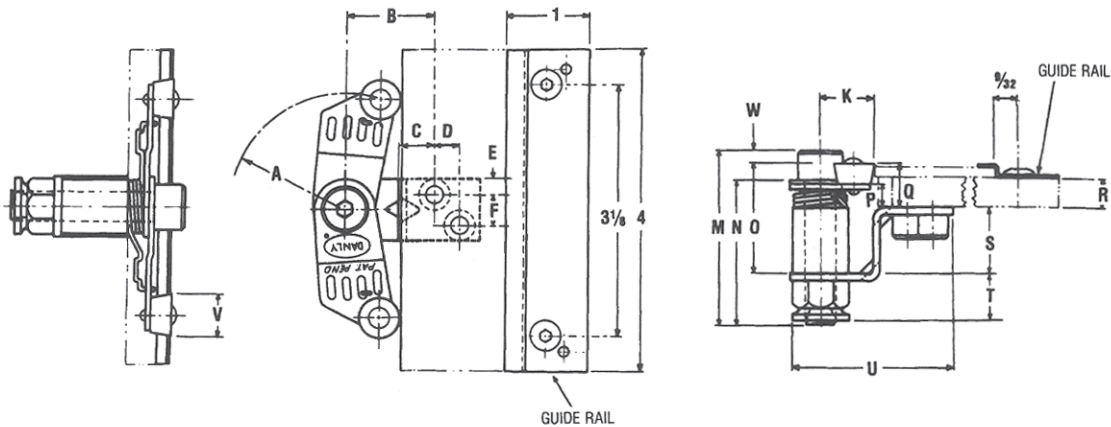
Roller Stock Guides

Product Features

The roller stock guides provide for accurate guiding of strip and coil stock. This product is designed to withstand hard wear and vibration. All posts are made of steel and the rollers, arms, collar and brackets are hardened.



9-60-6



Part Number	Roller Guide	A	B	C	D	E	F	K	M	N
9-70-6	Large	2	1-15/32	5/8	1/4	5/16	7/16	7/8 min.	3-1/4	2-3/4
9-60-6	Small	1-3/8	1-1/16	7/16	5/16	3/16	3/8	5/8 min.	2-1/8	1-3/4

Part Number	Roller Guide	O	P	Q	R	S	T	U	V	W
9-70-6	Large	1.836	.244	.617	3/8 *	1-7/32	19/32	2-3/4	3/4	.164
9-60-6	Small	1.351	.292	.538	3/8 *	13/16	15/32	2	1/2	.164

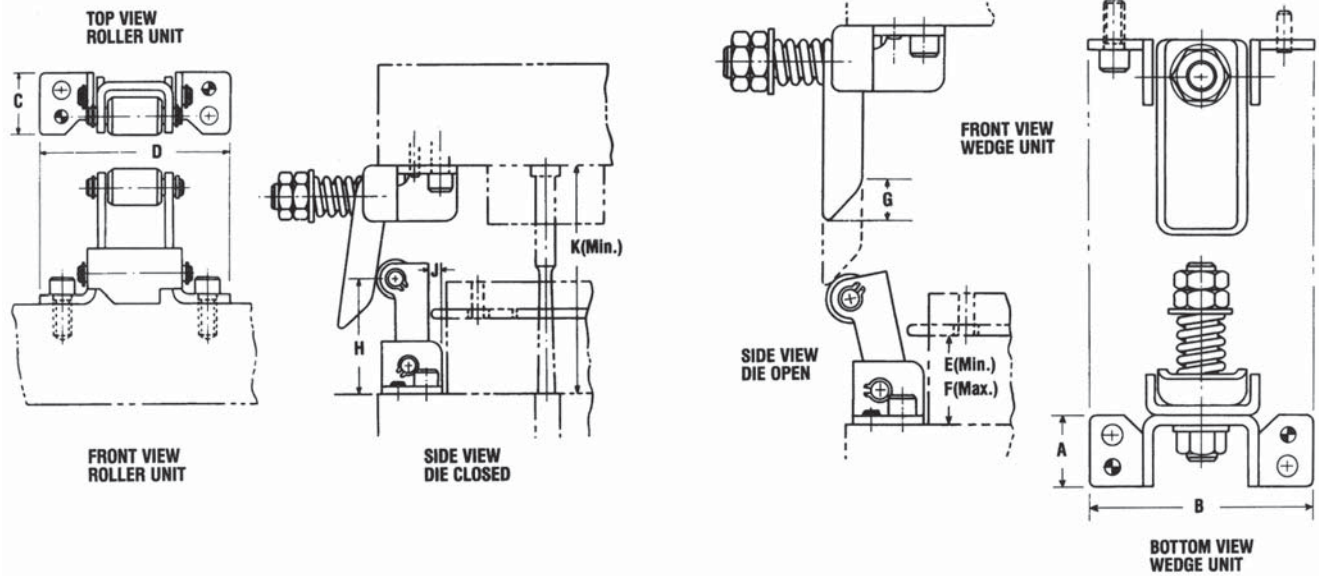
* If platform thickness is other than 3/8", certain easily-made mounting adjustments are necessary. These adjustments are covered in the mounting instructions included in each box.

Stock Pusher



Product Features

These stock pushers mount on the front, rear or sides of a die set to best suit die and feed. Both sizes of stock pushers are supplied with three different length wedges, allowing the diemaker to select the best wedge for a particular shut height.



Part Number	A	B	C	D Min.	E Max.	F	G	H	J Min.	K	Wedge Lengths	Spring Rate
9-90-6	7/8	2-13/16	7/8	2-13/16	7/8	1-3/4	5/8	1-11/16	1/8	3	2-3/8,* 2-7/8, 3-3/8	300 lb/in
9-95-6	1-3/8	3-3/8	1-1/4	3-3/8	1-1/4	2-1/4	1-1/8	2	3/16	4	3-13/16,* 4-5/16, 4-13/16	1630 lb/in

Screws, dowels and mounting instructions are included in package with each Stock Pusher.

* Shortest wedge length is assembled into unit; other wedges are included in package.

Stop Blocks

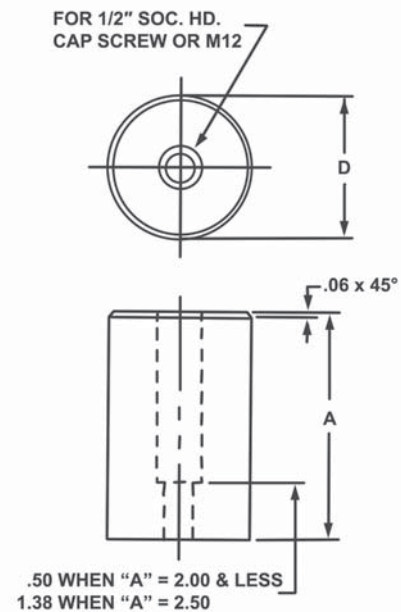
Product Features

These stop blocks are precision machined from 1018 material. Additionally, the blocks are inspected to provide uniform quality and dimensions. The length dimension is .060" oversize.



20-150-CSB

Part No. (in)	Diameter D (in)	Length A (in)
20-150CSB	2.00	1.50
20-200CSB	2.00	2.00
20-250CSB		2.50
20-300CSB		3.00
20-350CSB	2.00	3.50
20-400CSB		4.00
20-425CSB		4.25
20-475CSB	2.00	4.75
20-525CSB		5.25
20-550CSB		5.50
20-600CSB	2.00	6.00
20-650CSB		6.50
25-150CSB	2.50	1.50
25-200CSB	2.50	2.00
25-250CSB		2.50
25-300CSB	2.50	3.00
25-350CSB		3.50
25-400CSB	2.50	4.00
25-425CSB		4.25
25-475CSB		4.75
25-525CSB	2.50	5.25
25-550CSB		5.50
25-600CSB	2.50	6.00
25-650CSB		6.50



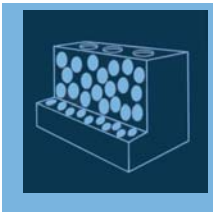
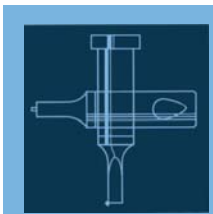
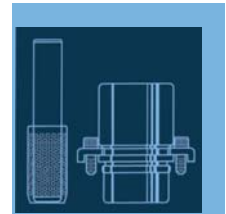
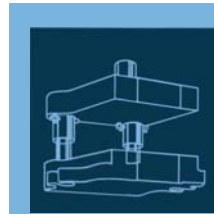
Notes

DIEMAKERS' SUPPLIES

The Danly IEM Value Proposition

- I. **Danly IEM** is recognized as the leader in manufacturing quality die sets and related products to the global parts forming industry. Our reputation has been built by satisfying customer needs, and we are very strong in the automotive and appliance industries.
- II. **Danly IEM** offers outstanding delivery on a consistent basis. Choosing us as a supplier means that our customers have a competitive advantage in delivering their products to the market.
- III. **Danly IEM** has complex machining capabilities on die sets at several strategically located facilities. Locations throughout the USA means lower shipping costs and allowing **Danly IEM** to machine complex die sets means the customer's machining centers have additional capacity.
- IV. **Danly IEM's** vast breadth of products assures innovative solutions. We strive to address customer problems by utilizing our research and development department as well as other technical professionals.
- V. **Danly IEM** has a technically trained sales force and distributor channels with engineering support. Sales, marketing and engineering professionals are available to support our product lines.

- **Competitive Prices**
- **Reliability and Performance**



**...A LEADING MANUFACTURER
AND INNOVATOR OF DIE SETS
AND DIE COMPONENTS
SUPPLIED GLOBALLY TO THE
METAL FORMING INDUSTRY...**



- **High Quality Design & Construction**
- **Outstanding Service & Support**



DIEMAKERS' SUPPLIES CATALOG



Distributed by:

www.danly.com
pins@danly.com

WITHIN THE USA & CANADA

CALL: 800-243-2659

FAX: 800-833-2659

OUTSIDE THE USA & CANADA

CALL: 001-248-489-7816

FAX: 001-248-553-6842



The Anchor Danly Company